

Collection: Fry

Item Number: Fry0001

Category: Effigy

Region: Arctic

Tribe: Eskimo

Period: 1850-1875

Materials: Wood; Russian trade beads

Description: Carved wooden box in the form of a whale in which Eskimo hunters kept their harpoon points. This caused the hunted whale to become accustomed to having harpoon points driven into it by the hunters.

Condition: Excellent

Dimensions: Length 10.5 inches; Width 3.75 inches

Provenance:

European collection, Paris, France, 1998

Exhibitions:

Lure of the Arctic, Cincinnati Art Museum, October 2007 - January 2008



Collection: Fry

Item Number: Fry0002

Category: Effigy

Region: Arctic

Tribe: Eskimo

Period: 1850-1875

Materials: Hardwood

Description: Hunting charm to be lashed in the front of a umiak to bring good fortune.

Condition: Excellent

Dimensions: Length 13.25 inches; Width 3.75 inches

Provenance:

Ludwig Kumlien, Hogate Expedition, Smithsonian Institution, 1878

Exhibitions:

Lure of the Arctic, Cincinnati Art Museum, October 2007 - January 2008



Collection: Fry

Item Number: Fry0003

Category: Effigy

Region: Arctic

Tribe: Eskimo

Period: 1850-1875

Materials: Wood/cedar

Description: Umiak seat, with carved whales to aid in bringing about a successful hunt.

Condition: Good

Dimensions: Height 9 inches; Width 13.25 inches

Provenance:

J.C. Leff Collection



Collection: Fry

Item Number: Fry0004

Category: Effigy

Region: Arctic

Tribe: Eskimo

Period: 1850-1875

Materials: Wood/Russian trade beads

Description: Whale hunting charm, to be lashed in the front of a umiak to aid in bringing about a successful hunt.

Condition: Good

Dimensions: Length 12.5 inches; Width 4.5 inches

Provenance:

J.C. Leff Collection

Exhibitions:

Lure of the Arctic, Cincinnati Art Museum, October 2007 - January 2008



Collection: Fry

Item Number: Fry0005

Category: Effigy

Region: Arctic

Tribe: Eskimo

Period: 1850-1875

Materials: Hardwood

Description: Umiak seat depicting a right whale, to aid in bringing success to the hunt.

Condition: Excellent

Dimensions: Length 10 inches; Height 12.25 inches

Provenance:

Paul Gray, Old Chatham, N.Y.

Exhibitions:

Lure of the Arctic, Cincinnati Art Museum, October 2007 - January 2008



Collection: Fry

Item Number: Fry0006

Category: Effigy

Region: Arctic

Tribe: Eskimo

Period: 1825-1850

Materials: Cedar wood; Russian trade beads

Description: Carved wooden effigy in the form of a right whale, made to contain sharpened harpoon points or blades used in whale hunting. Trade beads are used to represent eyes. It was believed by the Eskimo whale hunters that carrying the harpoon points in the body of this effigy would cause the whale to become accustomed to having points within it. The whale would, therefore, allow itself to be killed.

Condition: Fair

Dimensions: Length 14 inches; Width 4.25 inches

Provenance:

Jeffrey Myers, New York, N.Y.

Exhibitions:

Lure of the Arctic, Cincinnati Art Museum, October 2007 - January 2008



Collection: Fry

Item Number: Fry0007

Category: Effigy

Region: Arctic

Tribe: Eskimo

Period: 1850-1875

Materials: Hardwood

Description: Hunting charm, to be tied in place in the bow of a umiak, to bring success to the hunt.

Condition: Good

Dimensions: Length 6.5 inches; Width 2.25

Exhibitions:

Lure of the Arctic, Cincinnati Art Museum, October 2007 - January 2008



Collection: Fry

Item Number: Fry0008

Category: Effigy

Region: Arctic

Tribe: Eskimo

Period: 1850-1875

Materials: Hardwood and blue Russian trade beads

Description: Seal effigy, probably related to seal hunting

Condition: Good

Dimensions: Length 9.75 inches; Width 2.25

Provenance:

Pt. Hope Alaska

Exhibitions:

Lure of the Arctic, Cincinnati Art Museum, October 2007 -
January 2008



Collection: Fry

Item Number: Fry0009

Category: Effigy

Region: Arctic

Tribe: Eskimo

Period: 1850-1875

Materials: Wood and small seed beads

Description: Hunting charm to be lashed in the front of a umiak to bring good fortune.

Condition: Good

Dimensions: Length 5.5 inches; Width 3 inches

Provenance:

Ted Trotta and Anna Bona

Exhibitions:

Lure of the Arctic, Cincinnati Art Museum, October 2007 - January 2008



Collection: Fry

Item Number: Fry0010

Category: Effigy

Region: Arctic

Tribe: Eskimo

Period: 1875-1900

Materials: Hardwood and walrus ivory

Description: Net float in the form of a seal, with ivory rattles. The seal was considered an exceptional "catcher". Utilizing it on fishing nets was thought to assist in bringing fish to the net

Condition: Good

Dimensions: Length 5.25 inches; Width 2.25 inches

Provenance:

Larry Frank

Exhibitions:

Lure of the Arctic, Cincinnati Art Museum, October 2007 - January 2008



Collection: Fry

Item Number: Fry0011

Category: Effigy

Region: Arctic

Tribe: Eskimo

Period: 1875-1900

Materials: Hardwood and shell eyes

Description: Net float in the form of a seal. The seal was considered an exceptional "catcher". Utilizing it on fishing nets was thought to assist in bringing fish to the net

Condition: Good

Dimensions: Length 2.75 inches; Width 2.25 inches

Exhibitions:

Lure of the Arctic, Cincinnati Art Museum, October 2007 - January 2008



Collection: Fry

Item Number: Fry0012

Category: Plug - Wound Plug

Region: Arctic

Tribe: Eskimo

Period: 1875-1900

Materials: Wood, polar bear fur and Russian trade bead eyes.

Description: Wound or throat plug.

Condition: Good

Dimensions: Length 14 inches

Provenance:

Paul Gray, Old Chatham, N.Y.

Exhibitions:

Lure of the Arctic, Cincinnati Art Museum, October 2007 - January 2008



Collection: Fry

Item Number: Fry0013

Category: Float - Net Float

Region: Arctic

Tribe: Eskimo

Period: 1875-1900

Materials: Hardwood and shell eyes

Description: Net float in the form of a seal. The seal was considered an exceptional "catcher". Utilizing it on fishing nets was thought to assist in bringing fish to the net

Condition: Good

Dimensions: Length 4.5 inches; Width 2 inches

Exhibitions:

Lure of the Arctic, Cincinnati Art Museum, October 2007 - January 2008



Collection: Fry

Item Number: Fry0014

Category: Float - Net Float

Region: Arctic

Tribe: Eskimo

Period: 1850-1875

Materials: Wood with ivory eyes

Description: Net float used on fishing net thought to attract fish.

Condition: Excellent

Dimensions: Length 3.5 inches



Collection: Fry

Item Number: Fry0015

Category: Plug - Wound Plug

Region: Arctic

Tribe: Eskimo

Period: 1875-1900

Materials: Wood and walrus ivory

Description: Utilized to stop the bleeding of a harpooned seal.

Condition: Excellent

Dimensions: Length 8.25 inches

Exhibitions:

Lure of the Arctic, Cincinnati Art Museum, October 2007 - January 2008



Collection: Fry

Item Number: Fry0016

Category: Box

Region: Arctic

Tribe: Eskimo

Period: 1875-1900

Materials: Wood/beads

Description: Bent wood box with inset beads on lid, possibly a sewing box.

Condition: Excellent

Dimensions: Length 8; Width 4.75; Height 4.25

Exhibitions:

Lure of the Arctic, Cincinnati Art Museum, October 2007 - January 2008



Collection: Fry

Item Number: Fry0017

Category: Container

Region: Arctic

Tribe: Eskimo

Period: 1850-1875

Materials: Wood, sinew and paint

Description: Small bent wood container decorated with whale flukes. This piece probably related to whale hunting although the specific use is not known.

Condition: Excellent

Dimensions: Height 3.5 inches

Exhibitions:

Lure of the Arctic, Cincinnati Art Museum, October 2007 - January 2008



Collection: Fry

Item Number: Fry0018

Category: Box

Region: Arctic

Tribe: Eskimo

Period: 1875-1900

Materials: Wood and walrus ivory

Description: Eskimo hunters work box. This box probably once contained an assortment of hunting and other implements.

Condition: Excellent

Dimensions: Length 16 inches; Width 8 inches; Height 6.5 inches

Provenance:

Paul Gray, Old Chatham, N.Y.

Exhibitions:

Lure of the Arctic, Cincinnati Art Museum, October 2007 - January 2008



Collection: Fry

Item Number: Fry0019

Category: Belt

Region: Arctic

Tribe: Eskimo

Period: 1850-1875

Materials: Sea mammal hide and ivory

Description: Man's belt with walrus ivory toggles.

Condition: Excellent

Dimensions: Length 38 inches

Provenance:

Edward Nelson collected this piece for the Smithsonian Institution during his two year collecting trip across Alaska. This is one of the 500 or so pieces de-excessed from that collection. It is documented with the Nelson number on the Smithsonian tag.

Exhibitions:

Lure of the Arctic, Cincinnati Art Museum, October 2007 - January 2008



Collection: Fry

Item Number: Fry0020

Category: Pick - Root Pick

Region: Arctic

Tribe: Eskimo

Period: 1875-1900

Materials: Wood and walrus tusk

Description: Root pick for digging onion like vegetables. The thin tusk, secured to the handle by seal hide line, is probably from a female walrus.

Condition: Excellent

Dimensions: Length 22.5 inches; Width 16 inches

Exhibitions:

Lure of the Arctic, Cincinnati Art Museum, October 2007 - January 2008



Collection: Fry

Item Number: Fry0021

Category: Hat

Region: Arctic

Tribe: Eskimo

Period: 1850-1875

Materials: Wood

Description: Bent wood hunting hat, undecorated, probably from the Norton Sound area of Alaska.

Condition: Excellent

Dimensions: Length 11 inches; Height 8 inches

Provenance:

Jeffrey Myers, New York, N.Y.

Exhibitions:

Lure of the Arctic, Cincinnati Art Museum, October 2007 - January 2008



Collection: Fry

Item Number: Fry0022

Category: Pick - Root Pick

Region: Arctic

Tribe: Eskimo

Period: 1875-1900

Materials: Wood, bone and sea mammal hide

Description: These smaller root picks were made to extract onion like roots which were part of the Eskimo diet.

Condition: Excellent

Dimensions: Length 9 inches; Width 9 inches



Collection: Fry

Item Number: Fry0023

Category: Shovel

Region: Arctic

Tribe: Eskimo

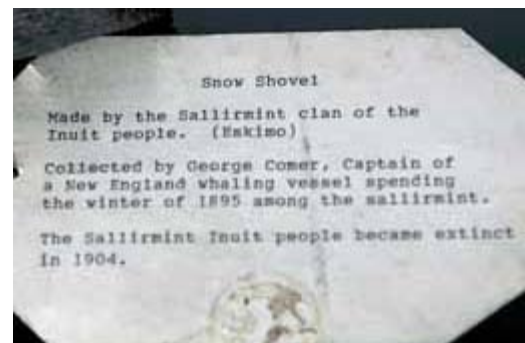
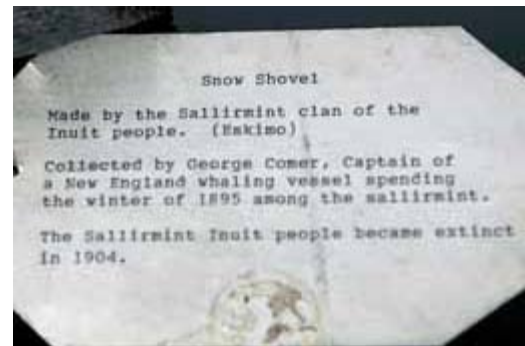
Period: 1850-1875

Materials: Bone

Description: Small snow shovel, made of bone. The tag describes it in more detail.

Condition: Excellent

Dimensions: Length 12.75; Width 5.5 inches



Collection: Fry

Item Number: Fry0024

Category: Harpoon

Region: Arctic

Tribe: Eskimo

Period: 1850-1875

Materials: Bone, walrus ivory and steel.

Description: Harpoon foreshafts and points of the style utilized by the Central Eskimo of Northern Canada.

Condition: Excellent

Dimensions: Length 16.75 inches

Provenance:

The top harpoon point was brought back to England by the British ethnologist, Joseph Banks.

Exhibitions:

Lure of the Arctic, Cincinnati Art Museum, October 2007 - January 2008



Collection: Fry

Item Number: Fry0025

Category: Doll

Region: Arctic

Tribe: Eskimo

Period: 1850-1875

Materials: Ivory, sea mammal hide, sinew and claws of a small furbearing animal.

Description: Eskimo doll, in traditional 1850s dress. The ivory face is that of a woman. The hands are made of paws of a small fur bearing animal.

Condition: Good

Dimensions: Length 6.75 inches

Exhibitions:

Lure of the Arctic, Cincinnati Art Museum, October 2007 - January 2008



Collection: Fry

Item Number: Fry0026

Category: Point

Region: Arctic

Tribe: Eskimo

Period: 1850-1875

Materials: Walrus ivory and sinew

Description: Three pronged point from the shaft of a spear type implement utilized for hunting birds on the water while multing.

Condition: Excellent

Dimensions: Height 8 inches; Width 5.5 inches

Provenance:

Beasley Collection, England



Collection: Fry

Item Number: Fry0027

Category: Ulu

Region: Arctic

Tribe: Eskimo

Period: 1850-1875

Materials: Wood, metal and walrus ivory.

Description: Central Eskimo ulu, quite old, made of wood, walrus ivory and thin metal. This ulu form is generally associated with the northern most reaches of Canada.

Condition: Excellent

Dimensions: Height 3.5 inches; Width 3.75 inches

Provenance:

John Molloy, New York

Exhibitions:

Lure of the Arctic, Cincinnati Art Museum, October 2007 - January 2008



Collection: Fry

Item Number: Fry0028

Category: Mask

Region: Arctic

Tribe: Eskimo

Period: 1850-1875

Materials: Wood

Description: Wolf mask from the Bering Sea, lightweight wood with red pigment, crudely carved with implements which may have been made of stone.

Condition: Excellent

Dimensions: Height 7.75; Width 5.35 inches

Provenance:

Paul Gray, Old Chatham, N.Y.

Exhibitions:

Lure of the Arctic, Cincinnati Art Museum, October 2007 - January 2008



Collection: Fry

Item Number: Fry0029

Category: Mouthpiece

Region: Arctic

Tribe: Eskimo

Period: 1875-1900

Materials: Wood and stone.

Description: Mouthpieces for bow drills, with effigy forms. These pieces were made along the Bering Sea and used with bits and bow drills, for drilling holes in wood, ivory and other materials.

Condition: Excellent

Dimensions: The top piece is 6.25 inches by 1.75 inches
The bottom piece is 4.75 inches by 1.50 inches

Provenance:

Larry Frank

Exhibitions:

Lure of the Arctic, Cincinnati Art Museum, October 2007 - January 2008



Collection: Fry

Item Number: Fry0030

Category: Mask

Region: Arctic

Tribe: Eskimo

Period: 1850-1875

Materials: Wood

Description: Mask, of wood, crudely carved, from the Bering Sea area of Alaska.

Condition: Excellent

Dimensions: Height 7.25 inches; Width 5.75 inches

Provenance:

Ted Trotta and Anna Bona

Exhibitions:

Lure of the Arctic, Cincinnati Art Museum, October 2007 - January 2008



Collection: Fry

Item Number: Fry0031

Category: Mask

Region: Arctic

Tribe: Eskimo

Period: 1850-1875

Materials: Hardwood

Description: Partial mask, with one side broken away.
This mask is made of a reasonably hard wood.

Condition: Good

Dimensions: Height 7.75 inches; Width 4.25 inches

Provenance:

Irwin and Marjorie Goodman

Exhibitions:

Lure of the Arctic, Cincinnati Art Museum, October 2007 -
January 2008



Collection: Fry

Item Number: Fry0032

Category: Bola

Region: Arctic

Tribe: Eskimo

Period: 1850-1875

Materials: Walrus ivory, sinew, feathers and plant material.

Description: Bolas, such as this, were utilized by the Eskimos of North Alaska for hurling at birds in flight. The weights, of walrus ivory or walrus teeth would catch the legs or body of flying birds and bring them to the ground.

Condition: Excellent

Dimensions: Length 30 inches



Collection: Fry

Item Number: Fry0033

Category: Bola

Region: Arctic

Tribe: Eskimo

Period: 1850-1875

Materials: Walrus ivory and sinew with plant fiber

Description: Bola, with each weight insized with animal depiction. The bola was meant to be thrown into flocks of flying birds, to bring them to the ground.

Condition: Excellent

Dimensions: Length 34 inches

Exhibitions:

Lure of the Arctic, Cincinnati Art Museum, October 2007 - January 2008



Collection: Fry

Item Number: Fry0034

Category: Box

Region: Arctic

Tribe: Eskimo

Period: 1875-1900

Materials: Sea mammal hide and wood.

Description: Eskimo box, of sea mammal hide and wood.
The specific use of this is not known.

Condition: Excellent

Dimensions: Length 6.25 inches; Width 2.75 inches



Collection: Fry

Item Number: Fry0035

Category: Hook - Fish Hook

Region: Arctic

Tribe: Eskimo

Period: 1875-1900

Materials: Walrus ivory, bone, metal, trade beads and sinew.

Description: This collection of Eskimo fish hooks contains hooks generally made of walrus ivory, however some are made of bone. All have conventional metal hooks and are in the form of a small fish of one sort or another.

Condition: Excellent

Dimensions: 3.5 to 1.75 inches in length.



Collection: Fry

Item Number: Fry0036

Category: Hook - Fish Hook

Region: Arctic

Tribe: Eskimo

Period: 1875-1900

Materials: Walrus ivory with metal hooks

Description: Well carved fishing hooks, of walrus ivory, with treble hook suspended by link chain.

Condition: Excellent

Dimensions: Ivory fish hook body is 4.25 inches in length. Total length, to the end of the hook is 14 inches.



Collection: Fry

Item Number: Fry0037

Category: Hook - Fish Hook

Region: Arctic

Tribe: Eskimo

Period: 1850-1875

Materials: Walrus, brass cartridge cases, metal.

Description: Well carved early Eskimo fish hook with inset cartridge cases and metal hook.

Condition: Excellent

Dimensions: Length 4.25 inches

Provenance:

Paul Gray, Old Chatham, N.Y.

Exhibitions:

Lure of the Arctic, Cincinnati Art Museum, October 2007 - January 2008



Collection: Fry

Item Number: Fry0038

Category: Hook - Fish Hook

Region: Arctic

Tribe: Eskimo

Period: 1875-1900

Materials: Ivory, tradebeads, baleen, wire hooks and lead.

Description: Eskimo fish hook utilizing heavy lead weight and two hooks, separated by a baleen strip.

Condition: Excellent

Dimensions: Length 3 inches (ivory and lead)

Provenance:

Christene Heller, Pt. Hope, Alaska.



Collection: Fry

Item Number: Fry0039

Category: Knife

Region: Arctic

Tribe: Eskimo

Period: 1875-1900

Materials: Antler with steel blade

Description: Sidebladed knife, nicely decorated antler handle to which a blade is riveted in place.

Condition: Excellent

Dimensions: Length 10.5 inches.

Provenance:

Paul Gray, Old Chatham, N.Y.



Collection: Fry

Item Number: Fry0040

Category: Visor

Region: Arctic

Tribe: Eskimo

Period: 1850-1875

Materials: Wood

Description: Eskimo visors were utilized to protect one's eyes from the intense sun reflecting off the snow and sea ice during long daylight hours generally in the spring of the year. These visors were attached to the forehead with seal hide line.

Condition: Excellent

Dimensions: Length 7.25 inches; Width 3.50 inches



Collection: Fry

Item Number: Fry0041

Category: Visor

Region: Arctic

Tribe: Eskimo

Period: 1850-1875

Materials: Wood

Description: Visors and snow goggles utilized to block the intense glare of the sun off the snow and sea ice, particularly in the spring of the year when the reflections, during the long days, were most noticeable.

Condition: Excellent

Dimensions: Length 6.0 inches; Width 2.50 inches



Collection: Fry

Item Number: Fry0042

Category: Goggles - Snow Goggles

Region: Arctic

Tribe: Eskimo

Period: 1875-1900

Materials: Wood

Description: Very nicely carved snow goggles, with narrow slits, designed to protect the wearer's eyes from the slant of the sun off snow and ice, particularly in the spring of the year.

Condition: Excellent

Dimensions: Length 5.50 inches; Width 1.75 inches

Provenance:

Paul Gray, Old Chatham, N.Y.

Exhibitions:

Lure of the Arctic, Cincinnati Art Museum, October 2007 - January 2008



Collection: Fry

Item Number: Fry0043

Category: Goggles - Snow Goggles

Region: Arctic

Tribe: Eskimo

Period: 1875-1900

Materials: Wood

Description: Snow goggles, with a narrow slit to protect the wearer's eyes from the slant of the sun off snow and ice during the long spring arctic days.

Condition: Excellent

Dimensions: Length 5.50 inches; Width 2.0 inches



Collection: Fry

Item Number: Fry0044

Category: Drill - Bow drill, mouthpiece and bit

Region: Arctic

Tribe: Eskimo

Period: 1850-1875

Materials: Wood, ivory, stone and sea mammal hide

Description: Eskimo bow drill with mouthpiece with inset stone and drill. The bow is insized with hunting seams on each side.

Condition: Excellent

Dimensions: Length 12.25 inches (bow)

Provenance:

Paul Gray, Old Chatham, N.Y.

Exhibitions:

Lure of the Arctic, Cincinnati Art Museum, October 2007 - January 2008



Collection: Fry

Item Number: Fry0045

Category: Mouthpiece

Region: Arctic

Tribe: Eskimo

Period: 1850-1875

Materials: Wood and stone.

Description: Mouthpieces, for bow drills, were traditionally made of wood, with a stone recepticle, to receive the bit. Some of these were effigy shapes, such as the seal piece in the lower left. Others had beads inset, such as the example on the lower right.

Condition: Excellent

Dimensions: Length 7.50 inches; Width 1.75 inches



Collection: Fry

Item Number: Fry0046

Category: Knife - Story Knife

Region: Arctic

Tribe: Eskimo

Period: 1850-1875

Materials: Walrus ivory.

Description: Story knives, of walrus ivory, were made for children, usually young girls, to draw in the soft earth and, at the same time, tell a story.

Condition: Excellent

Dimensions: Length 11.25 inches; Width 1.75 inches

Provenance:

The bottom example came from the Claire Fejes collection.



Collection: Fry

Item Number: Fry0047

Category: Knife

Region: Arctic

Tribe: Eskimo

Period: 1875-1900

Materials: Walrus ivory, steel blade and seal skin sheath.

Description: Eskimo knife with nicely formed steel blade and handle, and seal hide sheath.

Condition: Excellent

Dimensions: Length 8.75 inches; Width 1.25 inches

Exhibitions:

Lure of the Arctic, Cincinnati Art Museum, October 2007 - January 2008



Collection: Fry

Item Number: Fry0048

Category: Knife

Region: Arctic

Tribe: Eskimo

Period: 1875-1900

Materials: Walrus ivory and steel

Description: Small Eskimo knives of steel and walrus ivory. These examples utilized available steel and riveted in place handles.

Condition: Excellent

Dimensions: Length 5.75 inches; Width 1.25 inches

Exhibitions:

Lure of the Arctic, Cincinnati Art Museum, October 2007 - January 2008



Collection: Fry

Item Number: Fry0049

Category: Knife - Draw Knife

Region: Arctic

Tribe: Eskimo

Period: 1850-1875

Materials: Walrus ivory and steel

Description: Small draw knives, of walrus ivory and steel, utilized for shaping arrows and other round objects.

Condition: Excellent

Dimensions: Length 4.0 inches; Width 0.75 inches

Exhibitions:

Lure of the Arctic, Cincinnati Art Museum, October 2007 - January 2008



Collection: Fry

Item Number: Fry0050

Category: Snow beater

Region: Arctic

Tribe: Eskimo

Period: 1875-1900

Materials: Antler with hide lashings

Description: Antler, thinly carved to create an implement utilized to remove snow from clothing upon entering a dwelling. The purpose was to prevent the snow from melting inside the dwelling and causing the clothing to become wet. Implements to remove snow from clothing were used throughout the Arctic.

Condition: Excellent

Dimensions: Length 22.0 inches; Width 1.25 inches

Exhibitions:

Lure of the Arctic, Cincinnati Art Museum, October 2007 - January 2008



Collection: Fry

Item Number: Fry0051

Category: Tool - Flensing Tool

Region: Arctic

Tribe: Eskimo

Period: 1875-1900

Materials: Walrus ivory, wood and hide

Description: Flensing tools, such as this, were utilized to assist in removing the hide from an animal, without damaging or puncturing the hide itself. The rounded and smooth ivory blade helped in this regard.

Condition: Excellent

Dimensions: Length 16.50 inches; Width 5/8 inches

Exhibitions:

Lure of the Arctic, Cincinnati Art Museum, October 2007 - January 2008



Collection: Fry

Item Number: Fry0052

Category: Maul

Region: Arctic

Tribe: Eskimo

Period: 1875-1900

Materials: Pectolite, sea mammal hide and wood.

Description: Short handled maul with an attractive blue stone, pectolite, utilized as a small hammer. Many of these mauls were made with these blue/green stone, lashed in place.

Condition: Excellent

Dimensions: Length 7.0 inches; Width 4.0 inches

Provenance:

Gary Litherland

Exhibitions:

Lure of the Arctic, Cincinnati Art Museum, October 2007 - January 2008



Collection: Fry

Item Number: Fry0053

Category: Maul

Region: Arctic

Tribe: Eskimo

Period: 1875-1900

Materials: Pectolite, seal hide lashings and ivory.

Description: Two smaller mauls, both with pectolite heads and ivory handles lashed in place, utilized as light hammers.

Condition: Excellent

Dimensions: Length 6.00 inches; Width 2.5 inches

Provenance:

Mike Higgins (top example)

Exhibitions:

Lure of the Arctic, Cincinnati Art Museum, October 2007 - January 2008



Collection: Fry

Item Number: Fry0054

Category: Adz

Region: Arctic

Tribe: Eskimo

Period: 1850-1875

Materials: Bone, flint and raw hide lashings

Description: Old original Eskimo adz with bone handle, socket piece and flint bit. The socket piece is lashed to the handle with seal hide.

Condition: Excellent

Dimensions: Length 13.5; Width 8.0 inches

Provenance:

Gary Litherland



Collection: Fry

Item Number: Fry0055

Category: Adz

Region: Arctic

Tribe: Eskimo

Period: 1850-1875

Materials: Bone, seal hide and flint

Description: Old, original adz of bone with flint blade. All components of this early adz appear to be original.

Condition: Excellent

Dimensions: Length 13.0; Width 5.25 inches

Provenance:

Forrest Fenn Collection

Exhibitions:

Lure of the Arctic, Cincinnati Art Museum, October 2007 - January 2008



Collection: Fry

Item Number: Fry0056

Category: Ulu

Region: Arctic

Tribe: Eskimo

Period: 1875-1900

Materials: Walrus ivory and steel

Description: Ulus, of the style are found in Northern Canada.

Condition: Excellent

Dimensions: Length 6.0; Width 4.75

Exhibitions:

Lure of the Arctic, Cincinnati Art Museum, October 2007 - January 2008



Collection: Fry

Item Number: Fry0057

Category: Ulu

Region: Arctic

Tribe: Eskimo

Period: 1850-1875

Materials: Walrus ivory and steel

Description: These older ulus are from Northern Canada.

Condition: Excellent

Dimensions: Length 4.50 inches; Width 5.25 inches

Exhibitions:

Lure of the Arctic, Cincinnati Art Museum, October 2007 - January 2008



Collection: Fry

Item Number: Fry0058

Category: Ulu

Region: Arctic

Tribe: Eskimo

Period: 1900-1925

Materials: Wood, bone and steel

Description: These ulus are generally of the type found on St. Lawrence Island, constructed with wood and bone handles and steel blades. These are all purpose womens' knives used for general cutting and dicing.

Condition: Good

Dimensions: Length 5.25; Width 3.25



Collection: Fry

Item Number: Fry0059

Category: Ulu

Region: Arctic

Tribe: Eskimo

Period: 1875-1900

Materials: Steel and walrus ivory

Description: Small ulus of the style generally used by women in sewing activities.

Condition: Excellent

Dimensions: Length 3.50; Width 2.25

Exhibitions:

Lure of the Arctic, Cincinnati Art Museum, October 2007 - January 2008



Collection: Fry

Item Number: Fry0060

Category: Lamp

Region: Arctic

Tribe: Eskimo

Period: 1850-1875

Materials: Stone

Description: Stone lamps of the style found on Kodiak Island and in the Aleutian Islands. Oil lamps of this and comparable styles were used throughout the Arctic.

Condition: Excellent

Dimensions: Length 6.0 inches; Width 4.75 inches

Provenance:

Gary Litherland

Exhibitions:

Lure of the Arctic, Cincinnati Art Museum, October 2007 - January 2008



Collection: Fry

Item Number: Fry0061

Category: Effigy

Region: Arctic

Tribe: Eskimo

Period: 1875-1900

Materials: Walrus ivory

Description: Well proportioned whale, carved of walrus ivory, undoubtedly utilized as a hunting charm or effigy.

Condition: Excellent

Dimensions: Length 8.25 inches; Width 2.0 inches

Exhibitions:

Lure of the Arctic, Cincinnati Art Museum, October 2007 - January 2008



Collection: Fry

Item Number: Fry0062

Category: Handle

Region: Arctic

Tribe: Eskimo

Period: 1875-1900

Materials: Walrus ivory and Russian trade beads

Description: Handle, probably for a bag of some type, nicely carved with four whale effigies inset with blue trade beads.

Condition: Excellent

Dimensions: Length 7.25 inches; Width 1.50 inches

Provenance:

Paul Gray, Old Chatham, N.Y.

Exhibitions:

Lure of the Arctic, Cincinnati Art Museum, October 2007 - January 2008



Collection: Fry

Item Number: Fry0063

Category: Effigy

Region: Arctic

Tribe: Eskimo

Period: 1875-1900

Materials: Walrus ivory

Description: Walrus ivory handle with a different whale effigy at each end. The particular use of this handle is not known.

Condition: Excellent

Dimensions: Length 3.25 inches

Provenance:

Paul Gray, Old Chatham, N.Y.

Exhibitions:

Lure of the Arctic, Cincinnati Art Museum, October 2007 - January 2008



Collection: Fry

Item Number: Fry0064

Category: Case - Needle Case

Region: Arctic

Tribe: Eskimo

Period: 1875-1900

Materials: Walrus ivory, blue Russian trade beads and sea mammal hide.

Description: This is a characteristic womens' implement for carrying and storing needles, generally made of bone, wrapped in the raw hide within the tube of walrus ivory. The hook enabled the needle case to be carried on a woman's belt.

Condition: Excellent

Dimensions: Length 12.25 inches; Width 0.75 inches

Exhibitions:

Lure of the Arctic, Cincinnati Art Museum, October 2007 - January 2008



Collection: Fry

Item Number: Fry0065

Category: Case - Needle Case

Region: Arctic

Tribe: Eskimo

Period: 1850-1875

Materials: Sea mammal hide and bone.

Description: Very old needle case of sea mammal hide and well worn, polished bone. The hide is folded, with small bone needles within it and fits within the tubular bone, to protect the needles. The longer piece, also of bone relates, in some manner to sewing.

Condition: Excellent

Dimensions: Length 5.75 inches

Provenance:

Claire Fejes

Exhibitions:

Lure of the Arctic, Cincinnati Art Museum, October 2007 - January 2008



Collection: Fry

Item Number: Fry0066

Category: Handle

Region: Arctic

Tribe: Eskimo

Period: 1875-1900

Materials: Walrus ivory and seed beads

Description: Handle, with well-carved seal effigy, possibly to be attached to the end of a harpoon line.

Condition: Excellent

Dimensions: Length 4.25 inches

Provenance:

Paul Gray, Old Chatham, N.Y.

Exhibitions:

Lure of the Arctic, Cincinnati Art Museum, October 2007 - January 2008



Collection: Fry

Item Number: Fry0067

Category: Drag - Seal Drag

Region: Arctic

Tribe: Eskimo

Period: 1875-1900

Materials: Walrus ivory, blue trade bead eyes and sea mammal hide

Description: This seal drag was utilized for hauling a seal home from a hunt.

Condition: Excellent

Dimensions: Length 12.0 inches

Exhibitions:

Lure of the Arctic, Cincinnati Art Museum, October 2007 - January 2008



Collection: Fry

Item Number: Fry0068

Category: Gauge - Net Gauge

Region: Arctic

Tribe: Eskimo

Period: 1850-1875

Materials: Bone

Description: Net gage, made for measuring mesh size when constructing a seal net or a fish net. This implement enabled one to make uniform nets of baleen or sea mammal hide.

Condition: Excellent

Dimensions: Length 11.25 inches; Width 3.0 inches



Collection: Fry

Item Number: Fry0069

Category: Drag - Seal Drag

Region: Arctic

Tribe: Eskimo

Period: 1875-1900

Materials: Walrus ivory and sea mammal hide.

Description: Nicely carved seal drag, of walrus ivory and sea mammal hide, utilized for dragging a seal home after a hunt.

Condition: Excellent

Dimensions: Length 13.0 inches

Provenance:

Paul Gray, Old Chatham, N.Y.

Exhibitions:

Lure of the Arctic, Cincinnati Art Museum, October 2007 - January 2008



Collection: Fry

Item Number: Fry0070

Category: Scratcher - Ice/Seal

Region: Arctic

Tribe: Eskimo

Period: 1850-1875

Materials: Wood, seal claws and sinew.

Description: Seal scratchers were utilized by Eskimo hunters in the spring of the year, when hunting seals on open sea ice. The scratcher was used to simulate the sound of a seal scratching at its breathing hole, so as to quiet the hunted seal, and allow the hunter to approach.

Condition: Excellent

Dimensions: Length 10.0 inches

Exhibitions:

Lure of the Arctic, Cincinnati Art Museum, October 2007 - January 2008



Collection: Fry

Item Number: Fry0071

Category: Scraper

Region: Arctic

Tribe: Eskimo

Period: 1850-1875

Materials: Wood, sea mammal hide lashings and walrus ivory

Description: This implement was utilized for collecting oil from the underside of a freshly skinned sea mammal. The oil was then retained for use in the lamps and for food.

Condition: Excellent

Dimensions: Length 14.0 inches

Provenance:

Miles Collection

Exhibitions:

Lure of the Arctic, Cincinnati Art Museum, October 2007 - January 2008



Collection: Fry

Item Number: Fry0072

Category: Dish

Region: Arctic

Tribe: Eskimo

Period: 1875-1900

Materials: Bone

Description: Dish, of bone, in the general shape of a whale with cut flukes, probably used to provide a drink of fresh water to the killed whale, to honor it.

Condition: Excellent

Dimensions: Length 9.75 inches; Width 3.0 inches

Exhibitions:

Lure of the Arctic, Cincinnati Art Museum, October 2007 - January 2008



Collection: Fry

Item Number: Fry0073

Category: Pins

Region: Arctic

Tribe: Eskimo

Period: 1875-1900

Materials: Walrus ivory

Description: Walrus ivory pins utilized to stake a seal hide or walrus hide, for drying and scraping

Condition: Excellent

Dimensions: Length 5.50 inches

Provenance:

Miller Museum, Homer, Alaska



Collection: Fry

Item Number: Fry0074

Category: Forpiece - Dart Forpiece

Region: Arctic

Tribe: Eskimo

Period: 1875-1900

Materials: Walrus ivory

Description: Walrus ivory forpiece, probably utilized on the end of an atlatl dart, recessed at the mouth to receive the ivory point.

Condition: Excellent

Dimensions: Length 11.25 inches



Collection: Fry

Item Number: Fry0075

Category: Games - Game pieces

Region: Arctic

Tribe: Eskimo

Period: 1875-1900

Materials: Walrus ivory

Description: Game pieces, mostly in the shape of birds however this collection contains one piece with a human face. These pieces were thrown, much like dice, with the pieces landing right side up being the winning pieces.

Condition: Excellent

Dimensions: Length 1.50 inches



Collection: Fry

Item Number: Fry0076

Category: Atlatl

Region: Arctic

Tribe: Eskimo

Period: 1850-1875

Materials: Wood

Description: Very old atlatl, of light wood, nicely carved sea otter in high relief.

Condition: Good

Dimensions: Length 18.25 inches; Width 2.25 inches

Provenance:

Paul Gray, Old Chatham, N.Y.



Collection: Fry

Item Number: Fry0077

Category: Atlatl

Region: Arctic

Tribe: Eskimo

Period: 1850-1875

Materials: Wood and walrus ivory

Description: Old Eskimo atlatl of wood and walrus ivory, with a seal head carved at the finger hole. The tip of this atlatl is missing.

Condition: Good

Dimensions: Length 15.25 inches; Width 2.25 inches

Provenance:

Paul Gray, Old Chatham, N.Y.

Exhibitions:

Lure of the Arctic, Cincinnati Art Museum, October 2007 - January 2008



Collection: Fry

Item Number: Fry0078

Category: Knife

Region: Arctic

Tribe: Eskimo

Period: 1875-1900

Materials: Steel and bone

Description: Long snow knife, for cutting blocks of snow with which to construct an igloo. This old knife is probably Central Eskimo having come from Canada's high North.

Condition: Good

Dimensions: Length 18.25 inches; Width 2.0 inches



Collection: Fry

Item Number: Fry0079

Category: Spear - Fish Spear

Region: Arctic

Tribe: Eskimo

Period: 1875-1900

Materials: Bone, steel and sea mammal hide wrappings

Description: This is the working end of a fish spear of bone, steel and wood. It would have had a handle on it at one time, five or six feet in length.

Condition: Good

Dimensions: Length 13.0 inches

Provenance:

Ted Trotta and Anna Bona



Collection: Fry

Item Number: Fry0080

Category: Handle - Drum Handle

Region: Arctic

Tribe: Eskimo

Period: 1875-1900

Materials: Walrus ivory with hide lashings.

Description: Drum handle, carved in the shape of a walrus head, for use on the tamborine style drums characteristic of the coastal Eskimo people of the Bering Sea.

Condition: Excellent

Dimensions: Length 5.25 inches;

Provenance:

Paul Gray, Old Chatham, N.Y.

Exhibitions:

Lure of the Arctic, Cincinnati Art Museum, October 2007 - January 2008



Collection: Fry

Item Number: Fry0081

Category: Handle - Drum Handle

Region: Arctic

Tribe: Eskimo

Period: 1875-1900

Materials: Walrus ivory

Description: Drum handle of walrus ivory with the face of a woman on the end of the handle. Handles like this were used to support the tamborine style drums utilized by the Eskimos of the Bering Sea.

Condition: Excellent

Dimensions: Length 3.25 inches

Provenance:

Paul Gray, Old Chatham, N.Y.

Exhibitions:

Lure of the Arctic, Cincinnati Art Museum, October 2007 - January 2008



Collection: Fry

Item Number: Fry0082

Category: Handle - Drum Handle

Region: Arctic

Tribe: Eskimo

Period: 1875-1900

Materials: Walrus ivory and blue Russian trade bead.

Description: Drum handle with a whale effigy inset with a blue bead, at the end. Handles like this were utilized on the tamborine style drums of the Eskimos.

Condition: Excellent

Dimensions: Length 4.50 inches

Provenance:

John Molloy, New York

Exhibitions:

Lure of the Arctic, Cincinnati Art Museum, October 2007 - January 2008



Collection: Fry

Item Number: Fry0083

Category: Toggle

Region: Arctic

Tribe: Eskimo

Period: 1875-1900

Materials: Walrus ivory and sea mammal hide.

Description: Eskimo toggle, of sea mammal hide and walrus ivory with seal head imagery. The specific use of this toggle is not known.

Condition: Excellent

Dimensions: Length 6.50 inches; Width 5.50

Exhibitions:

Lure of the Arctic, Cincinnati Art Museum, October 2007 - January 2008



Collection: Fry

Item Number: Fry0084

Category: Stone - Killing Stone

Region: Arctic

Tribe: Eskimo

Period: 1850-1875

Materials: Braided sea mammal hide and igneous stone.

Description: Hard stone, drilled to receive the braided sea mammal hide with loop at opposite end. This implement was utilized to kill wounded seals. It could be utilized by a hunter seated in a kayak.

Condition: Excellent

Dimensions: Length 41 inches; Width 2.50 inches

Provenance:

Earl Duncan, Denver, Colorado

Exhibitions:

Lure of the Arctic, Cincinnati Art Museum, October 2007 - January 2008



Collection: Fry

Item Number: Fry0085

Category: Pipe

Region: Arctic

Tribe: Eskimo

Period: 1825-1850

Materials: Wood, lead, copper and sinew

Description: Extremely old Eskimo/Inuit pipe with lead and copper bowl lashed to wooden stem.

Condition: Good

Dimensions: Length 5.25 inches;

Provenance:

The note on this old pipe indicates that it was brought back to England by John Franklin from one of his early explorations in the far North. The note appears to be authentic in all respects.

Exhibitions:

Lure of the Arctic, Cincinnati Art Museum, October 2007 - January 2008



Collection: Fry

Item Number: Fry0086

Category: Knife - Flensing Knife

Region: Arctic

Tribe: Eskimo

Period: 1875-1900

Materials: Walrus ivory, sea mammal hide lashings and wood.

Description: Implements like this were utilized to separate the hide from animals that had been hunted. Ivory bladed tools were utilized to prevent damage to the hides.

Condition: Excellent

Dimensions: Length 13.25 inches

Exhibitions:

Lure of the Arctic, Cincinnati Art Museum, October 2007 - January 2008



Collection: Fry

Item Number: Fry0087

Category: Lamp

Region: Arctic

Tribe: Eskimo

Period: 1850-1875

Materials: Steatite and sea mammal hide.

Description: Small seal oil lamp of the size were carried by hunters for use when caught in the elements or out for lengthy periods of time.

Condition: Excellent

Dimensions: Length 3 inches; Width 5 inches

Exhibitions:

Lure of the Arctic, Cincinnati Art Museum, October 2007 - January 2008



Collection: Fry

Item Number: Fry0088

Category: Box - Snuff Box

Region: Arctic

Tribe: Eskimo

Period: 1875-1900

Materials: Wood and horn

Description: Small snuff boxes, with nicely fitted bone and wood lids with sea mammal hide tulls.

Condition: Excellent

Dimensions: Length 3.25 inches; Width 2.0 inches



Collection: Fry

Item Number: Fry0090

Category: Ulu

Region: Arctic

Tribe: Eskimo

Period: 1875-1900

Materials: Walrus ivory and steel.

Description: This walrus ivory handled ulu was made with a steel blade marked "Sheffield". The ulu is characteristic style. This one would have been utilized for all purpose cutting.

Condition: Excellent

Dimensions: Length 5.50 inches; Width 3.25 inches



Collection: Fry

Item Number: Fry0091

Category: Scratcher - Ice/Seal

Region: Arctic

Tribe: Eskimo

Period: 1875-1900

Materials: Wood, seal claws, sinew and cord.

Description: Seal/ice scratchers were utilized by Eskimo hunters when hunting seals and attempting to reach them as they slept at their breathing hole. Scratching the ice with one of these implements would simulate a seal working at its breathing hole and was intended to lull the hunted seal back to sleep.

Condition: Excellent

Dimensions: Length 10 inches



Collection: Fry

Item Number: Fry0092

Category: Box

Region: Arctic

Tribe: Eskimo

Period: 1875-1900

Materials: Wood and walrus ivory

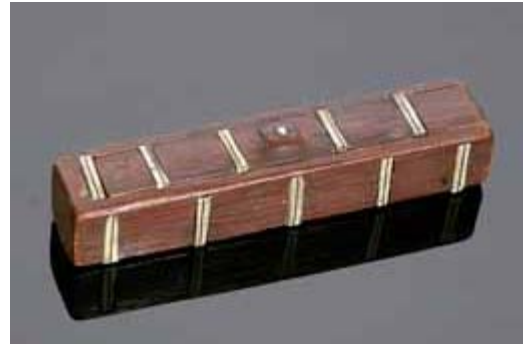
Description: Small rectangular box with sliding lid. This box could have been utilized for holding percussion caps or other small objects.

Condition: Excellent

Dimensions: Length 4.75 inches; Width 1.0 inches

Provenance:

Paul Gray, Old Chatham, N.Y.



Collection: Fry

Item Number: Fry0093

Category: Crampon

Region: Arctic

Tribe: Eskimo

Period: 1875-1900

Materials: Bone, metal studs and sea mammal hide lashings.

Description: Crampons, of bone and ivory with either metal studs or carved in place studs were tied to the bottom of boots for walking across smooth sea ice

Condition: Excellent

Dimensions: Length 3.50 inches; Width 1.0 inches

Provenance:

Miller Museum, Homer, Alaska



Collection: Fry

Item Number: Fry0094

Category: Knife

Region: Arctic

Tribe: Eskimo

Period: 1875-1900

Materials: Bone and steel

Description: Heavy bladed knife with bone handle.

Condition: Excellent

Dimensions: Length 10.25 inches; Width 2.0 inches



Collection: Fry

Item Number: Fry0095

Category: Box - Snuff Box

Region: Arctic

Tribe: Eskimo

Period: 1875-1900

Materials: Wood, bone and sea mammal hide.

Description: Nicely made snuff box of hollowed bone, with wood pinned in place on the bottom, and a bone cap, attached by sea mammal hide.

Condition: Excellent

Dimensions: Length 5.00 inches; Width 1.50 inches

Provenance:

Paul Gray, Old Chatham, N.Y.

Exhibitions:

Lure of the Arctic, Cincinnati Art Museum, October 2007 - January 2008



Collection: Fry

Item Number: Fry0096

Category: Point - Harpoon Point

Region: Arctic

Tribe: Eskimo

Period: 1875-1900

Materials: Walrus ivory and steel.

Description: These harpoon points are of the style normally associated with Northern Canada. The steel blades are pinned in place. These are typical toggle head harpoon points suitable for hunting walrus.

Condition: Good

Dimensions: Length 6.0 inches; Width 1.75 inches



Collection: Fry

Item Number: Fry0097

Category: Scraper

Region: Arctic

Tribe: Eskimo

Period: 1850-1875

Materials: Walrus ivory and flint.

Description: Small scrapers such as these were made to fit the woman's hand. They were utilized for scraping animal hides, preparing them for use as clothing. Many early skin scrapers were made of wood. These, however, are walrus ivory

Condition: Excellent

Dimensions: Length 4.0 inches



Collection: Fry

Item Number: Fry0098

Category: Ulu

Region: Arctic

Tribe: Eskimo

Period: 1875-1900

Materials: Steel and walrus ivory

Description: Ulu, of steel and walrus ivory. These are general purpose womens' knives. The wear on the ulu on the right side of the photograph indicates it was used by a right handed person.

Condition: Excellent

Dimensions: Length 4.0 inches; Width 3.0 inches



Collection: Fry

Item Number: Fry0099

Category: Ulu

Region: Arctic

Tribe: Eskimo

Period: 1875-1900

Materials: Walrus ivory and steel.

Description: Ulus, of various sizes, all with walrus ivory handles and steel blades.

Condition: Excellent

Dimensions: Length 3.50 inches; Width 4.0 inches



Collection: Fry

Item Number: Fry0100

Category: Ulu

Region: Arctic

Tribe: Eskimo

Period: 1900-1925

Materials: Wood, steel and musk ox horn.

Description: These ulus are of the style utilized on St. Lawrence Island, for general purpose cutting. Ulus like this are considered womens' knives. The blades are made from old saw blades.

Condition: Good

Dimensions: Length 6.75 inches; Width 4.75 inches



Collection: Fry

Item Number: Fry0101

Category: Knife

Region: Arctic

Tribe: Eskimo

Period: 1875-1900

Materials: Antler, steel and sea mammal hide.

Description: Mens' knives, also called "sidebladed knives" with steel blades, usually curved slightly, attached to antler handles with rivets. Knives like these were often wrapped with sea mammal hide to provide a firm grip.

Condition: Excellent

Dimensions: Length 11.0 inches



Collection: Fry

Item Number: Fry0102

Category: Scraper

Region: Arctic

Tribe: Eskimo

Period: 1850-1875

Materials: Wood, sea mammal hide and slate blade.

Description: Slate bladed hide scraper, utilized for preparing hides for the making of clothing.

Condition: Excellent

Dimensions: Length 8.50 inches

Provenance:

Birmingham Museum

Exhibitions:

Lure of the Arctic, Cincinnati Art Museum, October 2007 - January 2008



Collection: Fry

Item Number: Fry0103

Category: Scraper

Region: Arctic

Tribe: Eskimo

Period: 1875-1900

Materials: Wood, fabric, steel and sea mammal hide lashings.

Description: Hide scraper utilized for preparing hides for the making of clothing. Steel blades were utilized in scrapers of this style, once steel became available in the Arctic.

Condition: Good

Dimensions: Length 8.25 inches



Collection: Fry

Item Number: Fry0104

Category: Scraper

Region: Arctic

Tribe: Eskimo

Period: 1875-1900

Materials: Wood, steel and copper rivet.

Description: Hide scrapers utilizing wooden handles and steel blades, for preparing hides for the making of clothing.

Condition: Good

Dimensions: Lenth 7.00 inches



Collection: Fry

Item Number: Fry0105

Category: Scraper

Region: Arctic

Tribe: Eskimo

Period: 1850-1875

Materials: Wood, slate and sea mammal hide.

Description: Slate bladed hide scrapers, generally utilized by women.

Condition: Good

Dimensions: Length 5.25 inches;



Collection: Fry

Item Number: Fry0106

Category: Scraper

Region: Arctic

Tribe: Eskimo

Period: 1875-1900

Materials: Wood, steel and hide lashings.

Description: Wooden handled hide scrapers, with metal blades. The scraper on the right utilizes a part of a gun barrel, sharpened at the end. These were formed to fit the hand of the owner.

Condition: Good

Dimensions: Length 5.50 inches



Collection: Fry

Item Number: Fry0107

Category: Scraper

Region: Arctic

Tribe: Eskimo

Period: 1850-1875

Materials: Wood and flint.

Description: Hide scrapers, shaped to fit the hand of the owner, hardwood inset with flint blades. These scrapers were utilized to prepare hides for use as clothing.

Condition: Excellent

Dimensions: Length 5.0 inches



Collection: Fry

Item Number: Fry0108

Category: Knife

Region: Arctic

Tribe: Eskimo

Period: 1875-1900

Materials: Antler and steel blades.

Description: Sidebladed knives with curved steel blades riveted in place on antler handles. These are typical men's knives used throughout the Northern Arctic.

Condition: Good

Dimensions: Length 9.25 inches.



Collection: Fry

Item Number: Fry0109

Category: Knife

Region: Arctic

Tribe: Eskimo

Period: 1875-1900

Materials: Steel, sea mammal hide sheath and bone.

Description: Extremely large man's sidebladed knife, with sea mammal hide sheath just large enough to cover the blade. This long handled knife was collected in Northern Canada.

Condition: Good

Dimensions: Length 20.75 inches

Exhibitions:

Lure of the Arctic, Cincinnati Art Museum, October 2007 - January 2008



Collection: Fry

Item Number: Fry0110

Category: Pipe

Region: Arctic

Tribe: Eskimo

Period: 1875-1900

Materials: Wood with steel bowl and copper or brass rings.

Description: Eskimo pipe with steel trade bowl and wooden stem of the style found in North Alaska along the Bering Sea.

Condition: Excellent

Dimensions: Length 14.75 inches



Collection: Fry

Item Number: Fry0111

Category: Line - Seal Hide

Region: Arctic

Tribe: Eskimo

Period: 1875-1900

Materials: Oogret seal line, with walrus ivory and blue trade beads.

Description: The old tag on this line indicates that it was collected in 1906. This line would have been utilized for seal hunting. The ivory line divider is well carved and inset with blue trade beads. The harpoon point is of walrus ivory, with a steel blade. The line itself is sewn with sinew uniformly placed.

Condition: Excellent

Dimensions: Diameter 13.0 inches

Provenance:

Jeffrey Myer, New York, N.Y.

Exhibitions:

Lure of the Arctic, Cincinnati Art Museum, October 2007 - January 2008



Collection: Fry

Item Number: Fry0112

Category: Line - Seal Hide

Region: Arctic

Tribe: Eskimo

Period: 1875-1900

Materials: Oogret seal with walrus ivory.

Description: Lengthy seal hunting line, cut in a spiral fashion from an oogret seal, coiled as it was when last used by an Eskimo hunter.

Condition: Excellent

Dimensions: Diameter 14.0 inches

Provenance:

Ted Trotta and Anna Bona

Exhibitions:

Lure of the Arctic, Cincinnati Art Museum, October 2007 - January 2008



Collection: Fry

Item Number: Fry0113

Category: Pipe

Region: Arctic

Tribe: Eskimo

Period: 1875-1900

Materials: Hardwood and lead.

Description: Both of these pipes evidence a strong Siberian influence.

Condition: Excellent

Dimensions: Length 12.0 inches

Provenance:

The pipe at the top was purchased from Ye Olde Curiosity Shop for five dollars, at an earlier time.

Exhibitions:

Lure of the Arctic, Cincinnati Art Museum, October 2007 - January 2008



Collection: Fry

Item Number: Fry0114

Category: Bowl

Region: Arctic

Tribe: Eskimo

Period: 1875-1900

Materials: Wood and pigment

Description: This bentwood bowl is decorated with a mythological figure in black pigment. The bottom of the bowl is insized as well. Bowls like this were generally thought to be food bowls. The significance or importance of the figure painted on the inside of the bowl is not known.

Condition: Excellent

Dimensions: Length 9.75 inches; Width 6.25 inches

Provenance:

Paul Gray, Old Chatham, N.Y.

Exhibitions:

Lure of the Arctic, Cincinnati Art Museum, October 2007 - January 2008



Collection: Fry

Item Number: Fry0115

Category: Bowl

Region: Arctic

Tribe: Eskimo

Period: 1875-1900

Materials: Wood and black pigment

Description: Bentwood bowl with mythological figure in the bottom of it.

Condition: Excellent

Dimensions: Length 10.75 inches; Width 7.0 inches



Collection: Fry

Item Number: Fry0116

Category: Pipe

Region: Arctic

Tribe: Eskimo

Period: 1875-1900

Materials: Wood, sea mammal hide lashings, steel bowls and trade beads.

Description: Pipes, characteristic of North Alaska, with split stems and metal trade bowls. These pipe stems were wrapped in sea mammal hides to secure them.

Condition: Good

Dimensions: Length 17.0 inches



Collection: Fry

Item Number: Fry0117

Category: Pipe

Region: Arctic

Tribe: Eskimo

Period: 1875-1900

Materials: Wood, walrus ivory, metal and stone.

Description: Pipes in characteristic North Alaskan form, with split stems.

Condition: Excellent

Dimensions: Length 16.0 inches



Collection: Fry

Item Number: Fry0118

Category: Pipe

Region: Arctic

Tribe: Eskimo

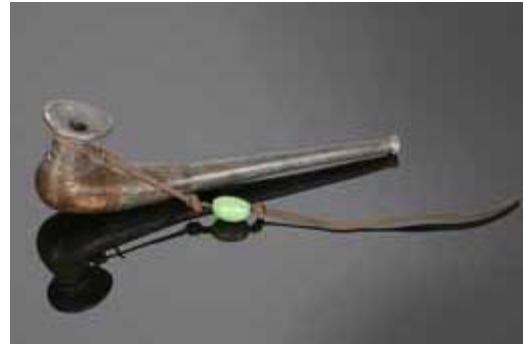
Period: 1875-1900

Materials: Hardwood, lead, sea mammal hide and trade bead.

Description: This is a typical St. Lawrence Island, Alaska Eskimo pipe with inlaid lead, inlaid into a hardwood bowl.

Condition: Excellent

Dimensions: Length 8.0 inches



Collection: Fry

Item Number: Fry0119

Category: Pipe

Region: Arctic

Tribe: Eskimo

Period: 1875-1900

Materials: Wood, walrus ivory, metal shell casings, sea mammal hide and trade beads.

Description: These pipes each utilized cartridge cases in their construction. They are characteristic of North Alaska, all having split stems. Spent cartridge cases, of brass, were often utilized, in some manner, by the Eskimos.

Condition: Good

Dimensions: Length 8.25 inches



Collection: Fry

Item Number: Fry0120

Category: Bowl

Region: Arctic

Tribe: Eskimo

Period: 1900-1925

Materials: Wood

Description: Bentwood bowl, nicely formed, probably utilized as a food bowl.

Condition: Good

Dimensions: Length 9.50 inches; Width 7.0 inches



Collection: Fry

Item Number: Fry0121

Category: Hook - Seal Hooks

Region: Arctic

Tribe: Eskimo

Period: 1900-1925

Materials: Wood, nails and sea mammal hide.

Description: Seal hooks were made to retrieve seals, shot with rifles, after the introduction of firearms into Alaska. In earlier years the toggle head harpoon, attached to a line held by the hunter, was sufficient to enable the hunter to bring the seal to shore, or to his kayak. When rifles became available it was necessary to utilize a hook such as this in order to retrieve the killed seal.

Condition: Excellent

Dimensions: Length 12.0 inches



Collection: Fry

Item Number: Fry0122

Category: Dish

Region: Arctic

Tribe: Eskimo

Period: 1850-1875

Materials: Wood

Description: Drift wood dish made in the shape of the available material. This piece may have been utilized as a serving platter.

Condition: Good

Dimensions: Length 25.0 inches; Width 14.50 inches

Provenance:

Claire Fejes, Fairbanks, Alaska



Collection: Fry

Item Number: Fry0123

Category: Mukluks

Region: Arctic

Tribe: Eskimo

Period: 1875-1900

Materials: Salmon skin

Description: High salmon skin mukluks, waterproof and durable.

Condition: Excellent

Dimensions: Height 20.0 inches.

Provenance:

Claire Fejes, Fairbanks, Alaska.

Exhibitions:

Lure of the Arctic, Cincinnati Art Museum, October 2007 - January 2008



Collection: Fry

Item Number: Fry0124

Category: Bowl

Region: Arctic

Tribe: Eskimo

Period: 1850-1875

Materials: Wood

Description: Large bowl of light wood, probably drift wood, undoubtedly carved from the shape of the existing material. Probably this was used as a food bowl at an earlier time.

Condition: Good

Dimensions: Length 28.50 inches; Width 13.0 inches



Collection: Fry

Item Number: Fry0125

Category: Mukluks

Region: Arctic

Tribe: Eskimo

Period: 1875-1900

Materials: Seal hide

Description: High Eskimo Mukluks, of seal hide, probably made for winter usage, sewn with sinew.

Condition: Good

Dimensions: Height 24.0 inches



Collection: Fry

Item Number: Fry0126

Category: Dish

Region: Arctic

Tribe: Eskimo

Period: 1875-1900

Materials: Wood and walrus ivory

Description: Large platter, noticeably wider at one end, inset with walrus ivory. This food platter was collected by Claire Fejes on St. Lawrence Island in the 1950s or early 1960s.

Condition: Excellent

Dimensions: Length 39.50 inches; Width 17.50 inches

Provenance:

Claire Fejes Collection, Fairbanks, Alaska.



Collection: Fry

Item Number: Fry0127

Category: Basket

Region: Arctic

Tribe: Eskimo

Period: 1900-1925

Materials: Grass, sea mammal hide and trade beads.

Description: Storage basket, large in size, decorated with beaded pieces of sea mammal hide.

Condition: Excellent

Dimensions: Height 19.0 inches; Width 16.0 inches



Collection: Fry

Item Number: Fry0128

Category: Bow

Region: Arctic

Tribe: Eskimo

Period: 1850-1875

Materials: Bone, wood and sinew.

Description: Eskimo bow, made by securing three pieces of bone together, utilizing sinew. Bows like this were made in the Arctic where wood was virtually non existent. The arrows are, however, made of wood, with small metal points.

Condition: Excellent

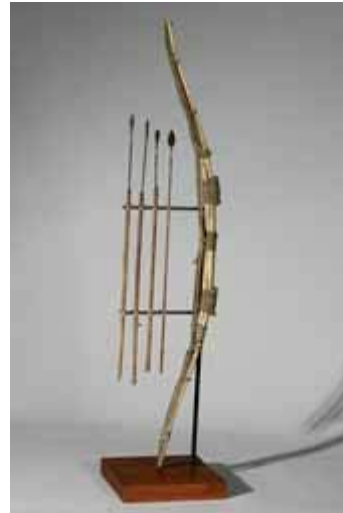
Dimensions: Length 35.0 inches high

Provenance:

Forrest Fenn Collection

Exhibitions:

Lure of the Arctic, Cincinnati Art Museum, October 2007 - January 2008



Collection: Fry

Item Number: Fry0129

Category: Bailer

Region: Arctic

Tribe: Eskimo

Period: 1850-1875

Materials: Cedar and cord

Description: Kayak bailers, such as this, were made from split cedar logs, hollowed and then the two pieces reattached and tied in place with cord. The bailer enabled the hunter to draw water from inside the kayak, into the bailer. When the bailer was full the hunter could place his finger over the bottom hole, and drain the water over the side of the kayak.

Condition: Excellent

Dimensions: Length 25.0 inches; Width 3.5 inches

Provenance:

Jack Curtright
Brant Mackley

Exhibitions:

Lure of the Arctic, Cincinnati Art Museum, October 2007 -
January 2008



Collection: Fry

Item Number: Fry0130

Category: Atlatl

Region: Arctic

Tribe: Eskimo

Period: 1850-1875

Materials: Wood, medium density

Description: This atlatl is of the style utilized by the Aluet. The flat, rather plain configuration is characteristic of the "throwing boards" of the Aluet.

Condition: Excellent

Dimensions: Length 18.0 inches

Provenance:

Frasier Douglass

Exhibitions:

Lure of the Arctic, Cincinnati Art Museum, October 2007 - January 2008



Collection: Fry

Item Number: Fry0131

Category: Container

Region: Arctic

Tribe: Eskimo

Period: 1875-1900

Materials: Wood

Description: Bentwood container with nicely fitted bottom piece. This container may have been utilized to hold urine.

Condition: Excellent

Dimensions: Length 13.0 inches; Width 11.0 inches



Collection: Fry

Item Number: Fry0132

Category: Float

Region: Arctic

Tribe: Eskimo

Period: 1850-1875

Materials: Seal skin and walrus ivory, as well as sea mammal hide.

Description: Seal hide floats were made from complete seals after the heads were removed. The openings were closed with ivory plugs or lashed with sea mammal hide. An ivory tube, for inflating the float was secured, generally at the neck area. Floats like this were tied to the end of a sea mammal hide line that was attached to a toggle head harpoon point. After the seal or walrus was harpooned this float would drag behind it to prevent the escape of the wounded animal.

Condition: Good

Dimensions: Length 37.0 inches; Width 15.0 inches

Exhibitions:

Lure of the Arctic, Cincinnati Art Museum, October 2007 - January 2008



Collection: Fry

Item Number: Fry0133

Category: Basket

Region: Arctic

Tribe: Eskimo

Period: 1900-1925

Materials: Grass, sea mammal hide and trade beads.

Description: Large Eskimo storage basket nicely decorated with beaded seal hide pieces sewn on.

Condition: Excellent

Dimensions: Height 13.0 inches; Width 14.0 inches



Collection: Fry

Item Number: Fry0134

Category: Belt

Region: Arctic

Tribe: Eskimo

Period: 1875-1900

Materials: Caribou teeth and sea mammal hide, with walrus ivory clasp.

Description: A woman's belt with caribou teeth sewed in place.

Condition: Good

Dimensions: Length 32.0 inches; Width 3.25 inches

Exhibitions:

Lure of the Arctic, Cincinnati Art Museum, October 2007 - January 2008



Collection: Fry

Item Number: Fry0135

Category: Sieve

Region: Arctic

Tribe: Eskimo

Period: 1875-1900

Materials: Bone, wood, baleen with cord and seal hide lashings.

Description: Sieve, formed from antler, with wooden handles one with baleen mesh and the other sinew. These nets or sieves were used by Eskimo fishermen to remove thin layers of ice from fishing holes, as the surface water was re-freezing. Baleen was utilized when available since water did not freeze to it. These implements were well known in northwestern Alaska and northeastern Siberia.

Condition: Good

Dimensions: 58" and 61"

Provenance:

Chilberg Collection

Exhibitions:

Lure of the Arctic, Cincinnati Art Museum, October 2007 - January 2008

References:

Bockstoe, J.R., *Eskimos of Northwest Alaska in the Early 19th Century*, Pitt River Museum, Oxford, 1977,



Collection: Fry

Item Number: Fry0136

Category: Sieve

Region: Arctic

Tribe: Eskimo

Period: 1875-1900

Materials: Wood and mesh tied from thin strips of seal hide

Description: Sieve, probably utilized by native fishermen for removing ice from fishing holes as the surface water was re-freezing.

Condition: Good

Dimensions: 48"

Provenance:

Chilberg Collection

References:

Bockstoe, J.R., *Eskimos of Northwest Alaska in the Early 19th Century*, Pitt River Museum, Oxford, 1977,



Collection: Fry

Item Number: Fry0137

Category: Lance

Region: Arctic

Tribe: Eskimo

Period: 1875-1900

Materials: Wood, seal hide and seal hide lashings, as well as glass.

Description: Kings Island Eskimo lances made for killing prey with a thrusting blow, usually from a kayak, once the prey had been harpooned and brought within striking distance. The points on these lances are chipped from glass fishing floats brought to Alaska by fishermen from other parts of the world.

Condition: Good

Dimensions: 39" to 45"

Provenance:

The top lance was acquired from Charles and Chris Murphy (Chris is a King Island Eskimo), Fairbanks, Alaska

The other two are from the Chilberg Collection and Jeffrey Myers, New York, N.Y.

Exhibitions:

Lure of the Arctic, Cincinnati Art Museum, October 2007 - January 2008

References:

Kaplan, Susan A. and Kristin J. Barsness, *Raven's Journey: The World of Alaska's Native People*, University of Pennsylvania, Philadelphia, 1986, p.128



Collection: Fry

Item Number: Fry0138

Category: Hook - Boat Hook

Region: Arctic

Tribe: Eskimo

Period: 1875-1900

Materials: Wood, bone and string lashings.

Description: Boat hooks like this were utilized by Eskimo hunters, to pull kayaks to icy shore landings, or push them away. One of the hooks is carved with a seal head at the end opposite the point.

Condition: Good

Dimensions: 66" and 53"

Provenance:

Chilberg Collection

Exhibitions:

Lure of the Arctic, Cincinnati Art Museum, October 2007 - January 2008

References:

Smith, J.G.E., *Arctic Art; Eskimo Ivory*, Museum of the American Indian, New York, 1980, p.37



Collection: Fry

Item Number: Fry0139

Category: Hook - Boat Hook

Region: Arctic

Tribe: Eskimo

Period: 1875-1900

Materials: Wood, walrus ivory and seal hide lashings.

Description: Small boat hook, of walrus ivory and wood, with seal image and decorative markings carved on the ivory hook. Boat hooks like this were utilized for aid in landing kayaks against icy shores and for fending the kayaks from rock and ice out croppings. This hook is likely from Nunivac Island, Alaska.

Condition: Good

Dimensions: 51"

Provenance:

Jack Bryan, New York, N.Y.

References:

Smith, J.G.E., *Arctic Art; Eskimo Ivory*, Museum of the American Indian, New York, 1980, p.37



Collection: Fry

Item Number: Fry0140

Category: Hook - Boat Hook

Region: Arctic

Tribe: Eskimo

Period: 1875-1900

Materials: Wood, walrus ivory and seal hide lashings

Description: Eskimo boat hook with nicely incised walrus ivory hook. The handle is a replacement, the original having been lost at an earlier time. Boat hooks like this were used by Eskimo hunters in kayaks, to assist in landing and leaving icy or rocky shores.

Condition: Good

Dimensions: 71"

References:

Smith, J.G.E., *Arctic Art; Eskimo Ivory*, Museum of the American Indian, New York, 1980, p.37



Collection: Fry

Item Number: Fry0141

Category: Shovel

Region: Arctic

Tribe: Eskimo

Period: 1875-1900

Materials: Wood, seal hide lashings and whale bone

Description: Snow shovels of this style were traditionally made of whale bone and wood, and utilized for clearing entrance ways to and from the semi-subterranean home sites of Northwest Alaska. These shovels were also used to bank snow around snow houses and to clear soft snow before cutting snow blocks for houses.

Condition: Very Good

Dimensions: 45" and 53"

Provenance:

Chilberg Collection

Exhibitions:

Lure of the Arctic, Cincinnati Art Museum, October 2007 - January 2008



Collection: Fry

Item Number: Fry0142

Category: Shovel

Region: Arctic

Tribe: Eskimo

Period: 1900-1925

Materials: Wood, tin and nails

Description: This snow shovel is made of multiple pieces of wood, probably salvaged from some earlier usages, with available tin nailed in place to protect the blade and hold the shovel together.

Condition: Good

Dimensions: 35.5" and 10"

Provenance:

Jessie McGahan, Moses Point, Alaska



Collection: Fry

Item Number: Fry0143

Category: Shovel

Region: Arctic

Tribe: Eskimo

Period: 1850-1875

Materials: Baleen, wood and bone.

Description: Early snow shovel excavated from an old home site at Savoonga, Alaska on St. Lawrence Island in the 1980s, made from a short piece of wood to which an animal scapular is tied in place with baleen. This old shovel may date to a time earlier than 1850.

Condition: Good

Dimensions: 34" x 9"

Provenance:

St. Lawrence Island, Alaska
Collected by W.R. Fry



Collection: Fry

Item Number: Fry0144

Category: Point - Harpoon Point

Region: Arctic

Tribe: Eskimo

Period: 1875-1900

Materials: Wood, walrus ivory, metal and seal hide line.

Description: This 19th century harpoon point was utilized for small sea mammals, probably seals. The shaft, on which this point is held, is not the harpoon itself but rather a support meant to hold the point and line until needed.

Condition: Very Good

Dimensions: 30.5"

References:

Fitzhugh, William W. and Susan A. Kaplan, *Inua; Spirit World of the Bering Sea Eskimo*, Smithsonian Institution Press, Washington D.C., 1982, p. 77



Collection: Fry

Item Number: Fry0145

Category: Dart

Region: Arctic

Tribe: Eskimo

Period: 1875-1900

Materials: Walrus ivory point, seal hide line, whale bone foreshaft, wood and fletching.

Description: Sealing dart, to be thrown with an atlatl, usually from a seated position in a kayak. The dart is weighted with a heavy whale bone foreshaft to add weight and energy to the throw. The ivory point detaches from the foreshaft, on impact, and remains attached, by seal hide line, to the wooden shaft in a martingale configuration, causing the shaft to turn crossways in the water and thereby retarding the escape of the injured prey.

Condition: Very Good

Dimensions: 54"

Provenance:

Paul Gray, Old Chatham, N.Y.

Exhibitions:

Lure of the Arctic, Cincinnati Art Museum, October 2007 - January 2008

References:

Fitzhugh, William W. and Susan A. Kaplan, *Inua; Spirit World of the Bering Sea Eskimo*, Smithsonian Institution Press, Washington D.C., 1982, p. 68



Collection: Fry

Item Number: Fry0146

Category: Dart

Region: Arctic

Tribe: Eskimo

Period: 1850-1875

Materials: Wood, ivory, seal hide line and seal bladder

Description: Bladder dart, with an inflatable seal bladder. The ivory point is designed to detach from the wooden shaft upon penetration of the prey. This dart is meant to be thrown with an atlatl, by a native hunter in a seated position in a kayak. The inflated bladder would aid in bringing the dart to the surface, allowing the prey to be retrieved and killed.

Condition: Good

Dimensions: 54"

Provenance:

Jeffrey Myers, New York, N.Y.

Exhibitions:

Lure of the Arctic, Cincinnati Art Museum, October 2007 - January 2008

References:

Fitzhugh, William W. and Susan A. Kaplan, *Inua; Spirit World of the Bering Sea Eskimo*, Smithsonian Institution Press, Washington D.C., 1982, p. 70



Collection: Fry

Item Number: Fry0147

Category: Paddle

Region: Arctic

Tribe: Eskimo

Period: 1850-1875

Materials: Wood and paint pigment

Description: Narrow bladed Aleut kayak paddles, nicely decorated with black and reddish pigment. The T handle on the bottom paddle is a replacement. Otherwise these two Aleut paddles are in original condition.

Condition: Very Good

Dimensions: 58.5" and 58"

Provenance:

Ted Trotta and Anna Bona (top), Shrub Oak, N.Y.

Exhibitions:

Lure of the Arctic, Cincinnati Art Museum, October 2007 - January 2008

References:

Kreech III, Shepard, *A Victorian Earl in the Arctic; The Travels and Collections of the Fifth Earl of Lonsdale, 1888-1889*, British Museum Publications Limited, London, 1989, fig.43



Collection: Fry

Item Number: Fry0148

Category: Paddle

Region: Arctic

Tribe: Eskimo

Period: 1850-1875

Materials: Wood, paint pigment and walrus ivory

Description: Eskimo paddle, Northwest Alaska, nicely decorated. The blade evidences an old well made walrus ivory repair. The T grip has been replaced although the balance of this old paddle is original in all respects.

Condition: Good

Dimensions: 62"

Provenance:

Ted Trotta and Anna Bona, Shrub Oak, N.Y.

Exhibitions:

Lure of the Arctic, Cincinnati Art Museum, October 2007 - January 2008

References:

Kreech III, Shepard, *A Victorian Earl in the Arctic; The Travels and Collections of the Fifth Earl of Lonsdale, 1888-1889*, British Museum Publications Limited, London, 1989, p.128



Collection: Fry

Item Number: Fry0149

Category: Harpoon

Region: Arctic

Tribe: Eskimo

Period: 1875-1900

Materials: Walrus ivory, wood, sinew and walrus hide line

Description: Eskimo harpoon, from Nunivac Island, Alaska. The pick on this harpoon is of walrus ivory, incised with a mythical sea mammal. The line and point are correct for the harpoon, however those elements were added at a later time. This harpoon is characteristic of early Nunivac Island implements.

Condition: Very Good

Dimensions: 60" (harpoon only)

Provenance:

Ted Trotta and Anna Bona, Shrub Oak, N.Y.

Exhibitions:

Lure of the Arctic, Cincinnati Art Museum, October 2007 - January 2008

References:

Fitzhugh, William W. and Susan A. Kaplan, *Inua; Spirit World of the Bering Sea Eskimo*, Smithsonian Institution Press, Washington D.C., 1982,



Collection: Fry

Item Number: Fry0150

Category: Harpoon

Region: Arctic

Tribe: Eskimo

Period: 1850-1875

Materials: Wood, walrus ivory and sinew, as well as metal point.

Description: Nunivac Island harpoon, incised pick with mythical sea mammal form characteristic of Nunivac Island harpoons.

Condition: Good

Dimensions: 61" (harpoon only)

References:

Fitzhugh, William W. and Susan A. Kaplan, *Inua; Spirit World of the Bering Sea Eskimo*, Smithsonian Institution Press, Washington D.C., 1982,



Collection: Fry

Item Number: Fry0151

Category: Harpoon

Region: Arctic

Tribe: Eskimo

Period: 1875-1900

Materials: Wood, whale bone, baleen and walrus ivory

Description: Harpoon from Northwest Alaska with nicely formed whale bone forepiece probably carved to represent a polar bear head, with trade bead eyes. The shaft is wrapped with baleen. The forepiece and pick are tied in place with seal hide line. This harpoon is of the size that would have made it appropriate for both walrus and seal hunting.

Condition: Very Good

Dimensions: 75"

Provenance:

Jeffrey Myers, New York, N.Y.
Chilberg Collection

Exhibitions:

Lure of the Arctic, Cincinnati Art Museum, October 2007 - January 2008

References:

Fitzhugh, William W. and Susan A. Kaplan, *Inua; Spirit World of the Bering Sea Eskimo*, Smithsonian Institution Press, Washington D.C., 1982,



Collection: Fry

Item Number: Fry0152

Category: Harpoon

Region: Arctic

Tribe: Eskimo

Period: 1850-1875

Materials: Wood, sinew, seal hide line, walrus ivory and steel

Description: This old seal harpoon, small in size utilizes a walrus ivory pick, forshaft and point. The line is sinew.

Condition: Excellent

Dimensions: 52" (harpoon only)

Provenance:

Paul Gray, Old Chatham, N.Y.
Bonhams, Simpson Collection

References:

Fitzhugh, William W. and Susan A. Kaplan, *Inua; Spirit World of the Bering Sea Eskimo*, Smithsonian Institution Press, Washington D.C., 1982,



Collection: Fry

Item Number: Fry0153

Category: Dart

Region: Arctic

Tribe: Eskimo

Period: 1875-1900

Materials: Walrus ivory point, seal hide line, whale bone forshaft, wood and fletching.

Description: Dart, for use with an atlatl, to be thrown by an Eskimo hunter seated in a kayak. The point is designed to detach from the forpiece, on impact. The seal hide line is attached to the shaft in a martingale configuration, causing the shaft to turn crossways as it is pulled through the water by the wounded seal. This dart is of the style used in Northwest Alaska.

Condition: Very Good

Dimensions: 52"

References:

Fitzhugh, William W. and Susan A. Kaplan, *Inua; Spirit World of the Bering Sea Eskimo*, Smithsonian Institution Press, Washington D.C., 1982,



Collection: Fry

Item Number: Fry0154

Category: Harpoon

Region: Arctic

Tribe: Eskimo

Period: 1875-1900

Materials: Wood (cedar), bone finger rest, forshaft and point, old twine.

Description: This harpoon is the style found in the St. Michael Island area of Alaska. It has a prominent handrest, of bone, a heavy forpiece probably of whale bone, and a rather crude point attached by old twine, to the cedar wood shaft. This is a thrusting harpoon, probably not utilized for throwing. The point is attached, by the line, to the shaft which would be held by the hunter after the point penetrates the prey and detaches from the harpoon.

Condition: Good

Dimensions: 67"

Provenance:

Gary Litherland

References:

Mason, Otis Tufton, *Aboriginal Harpoons: A Study in Ethnographic Distribution and Invention*, National Museum, 1900,



Collection: Fry

Item Number: Fry0155

Category: Paddle

Region: Arctic

Tribe: Eskimo

Period: 1875-1900

Materials: Wood

Description: Kayak paddles, decorated in part with paint pigment, all evidencing the characteristic ridge usually observed on 19th century Eskimo kayak paddles. These Eskimo paddles are believed to be from Northwest Alaska.

Condition: Very Good

Dimensions: 58" to 63"

Exhibitions:

Lure of the Arctic, Cincinnati Art Museum, October 2007 - January 2008



Collection: Fry

Item Number: Fry0156

Category: Paddle

Region: Arctic

Tribe: Eskimo

Period: 1875-1900

Materials: Wood

Description: King Island kayak paddle blades. These blades were intended to be lashed to a shaft and used as a conventional paddle or be utilized by the Eskimo hunter who could hold the short blade in one hand and propel the kayak forward with little apparent movement.

Condition: Very Good

Dimensions: 22" and 19"

Provenance:

Jeffrey Myers, New York, N.Y. (top)

Charles and Chris Murphy, Fairbanks, Alaska (bottom)

Exhibitions:

Lure of the Arctic, Cincinnati Art Museum, October 2007 - January 2008



Collection: Fry

Item Number: Fry0157

Category: Blade - Adz Blades

Region: Arctic

Tribe: Eskimo

Period: 1850-1875

Materials: Stone/Jade

Description: These blades, one utilized as an ulu and two as adz blades were carefully crafted from a dark green jade or jade like stone. Cut marks, although polished by the original maker, are still visible.

Condition: Very Good

Dimensions: 7" to 7.5"

Provenance:

Gary Litherland (adz blades). The ulu is from the Christine Heller Collection (ulu)

References:

Murdoch, John, *Ethnological Results of the Point Barrow Expedition, reprinted from the Ninth Annual Report of the Bureau of Ethnology, 1877-1888*, Smithsonian Institution Press, Washington, D.C., 1988, p.167



Collection: Fry

Item Number: Fry0158

Category: Maul

Region: Arctic

Tribe: Eskimo

Period: 1850-1875

Materials: Black stone, seal hide lashing and bone

Description: Heavy black stone, grooved to accept the line that secures it to the haft, of the style found in Barrow, Alaska at an earlier time. The bone handle and the lashing are somewhat light weight and are probably mid 20th century native replacements.

Condition: Good

Dimensions: 4.5" x 8.5"

Provenance:

Jeffrey Myer, New York, N.Y.

References:

Murdoch, John, *Ethnological Results of the Point Barrow Expedition, reprinted from the Ninth Annual Report of the Bureau of Ethnology, 1877-1888*, Smithsonian Institution Press, Washington, D.C., 1988,



Collection: Fry

Item Number: Fry0159

Category: Whip

Region: Arctic

Tribe: Eskimo

Period: 1875-1900

Materials: Wood and heavy hide braiding

Description: These early Eskimo whips were made for managing sled dogs. One has an old tag on it that says "dog whip".

Condition: Good

Dimensions: 9.5" (handles)

Provenance:

Paul Gray, Old Chatham, N.Y. (left)
Saline Michigan Antique Market (right)



Collection: Fry

Item Number: Fry0160

Category: Stool

Region: Arctic

Tribe: Eskimo

Period: 1925-1950

Materials: Wood, seal hide and ivory

Description: This seal hunter's stool was utilized by Eskimo hunters, hunting on sea ice at seal breathing holes. The hunters stood on stools such as this in order to prevent their feet from freezing to the ice. The strap was added by the hunter for ease in carrying the stool. This is a usual part of a seal hunter's gear.

Condition: Very Good

Dimensions: 8" x 7" x 10" high

Provenance:

Claire Fejes, Fairbanks, Alaska, collected at Point Hope, Alaska, in the 1950s

References:

Murdoch, John, *Ethnological Results of the Point Barrow Expedition, reprinted from the Ninth Annual Report of the Bureau of Ethnology, 1877-1888*, Smithsonian Institution Press, Washington, D.C., 1988,



Collection: Fry

Item Number: Fry0161

Category: Stool

Region: Arctic

Tribe: Eskimo

Period: 1850-1875

Materials: Wood

Description: Seal hunter's stool made to enable a seal hunter to stand on the sea ice at the seal's breathing hole. Eskimo hunters stood on stools like this with harpoon at hand, to prevent their feet from freezing to the ice, as they waited for the seal to appear at its breathing hole. Often seal hooks were carried underneath stools such as this. The original legs of this stool had been lost and replacement legs were added. The hook, which was also added, is an old authentic seal hook, although not as old as the stool itself.

Condition: Good

Dimensions: 11" x 14" x 10" high

Exhibitions:

Lure of the Arctic, Cincinnati Art Museum, October 2007 - January 2008

References:

Murdoch, John, *Ethnological Results of the Point Barrow Expedition, reprinted from the Ninth Annual Report of the Bureau of Ethnology, 1877-1888*, Smithsonian Institution Press, Washington, D.C., 1988,



Collection: Fry

Item Number: Fry0162

Category: Mask

Region: Arctic

Tribe: Eskimo

Period: 1850-1875

Materials: Wood and trade beads

Description: This Eskimo mask is of the style found at Point Barrow, Alaska. The half mask is characteristic of the masks of Point Barrow. A similar example can be found in the University of Pennsylvania collection in Philadelphia.

Condition: Very Good

Dimensions: 5" x 3.75"

Provenance:

John and Valerie Arieta, London, England

References:

Kaplan, Sandra A., *Spirit Keepers of the North*, University Museum, Philadelphia, 1983, p.17



Collection: Fry

Item Number: Fry0163

Category: Harpoon

Region: Arctic

Tribe: Eskimo

Period: 1875-1900

Materials: Walrus ivory, whale bone forshaft, baleen wrappings and wood shaft

Description: This is a heavy harpoon with a toggle head point at one end, attached to a seal hide line, and a pick, for testing the ice, at the opposite end. The forshaft is whale bone, and the pick is walrus ivory lashed in place with seal hide. This is of the style found in Point Barrow, Alaska.

Condition: Very Good

Dimensions: 71"

Exhibitions:

Lure of the Arctic, Cincinnati Art Museum, October 2007 - January 2008

References:

Mason, Otis Tufton, *Aboriginal Harpoons: A Study in Ethnographic Distribution and Invention*, National Museum, 1900, p.281



Collection: Fry

Item Number: Fry0164

Category: Unknown

Region: Arctic

Tribe: Eskimo

Period: 1875-1900

Materials: Wood plug, sea mammal skin and sinew

Description: This is a perplexing Eskimo piece. Although it is very nicely made and obviously had an intended purpose, the purpose is not apparent. It would be very much appreciated if anyone having information on this object could email us at Splendid Heritage.

Condition: Good

Dimensions: 9.5" x 3"

Provenance:

Chilberg Collection



Collection: Fry

Item Number: Fry0165

Category: Unknown

Region: Arctic

Tribe: Eskimo

Period: 1875-1900

Materials: Wood

Description: This unusual wooden object has two carved sea otters attached to the flat surface at one end. This does not appear to be an atlatl. It is, however, clearly Aleut or Eskimo. It would be much appreciated if anyone having information on this piece would write us at Splendid Heritage

Condition: Very Good

Dimensions: 22" x 3"

Provenance:

Tad and Sandy Dale, Santa Fe, New Mexico

Exhibitions:

Lure of the Arctic, Cincinnati Art Museum, October 2007 - January 2008



Collection: Fry

Item Number: Fry0166

Category: Toy

Region: Arctic

Tribe: Eskimo

Period: 1825-1850

Materials: Wood

Description: Carved wood kayak, probably made as a child's toy, with an ivory figure with its head slanted back slightly. The dark staining of the ivory and the kayak strongly suggests that this piece was excavated after being in the ground for a long time.

Condition: Very Good

Dimensions: 13.5"

Provenance:

Paul Gray, Old Chatham, New York

Exhibitions:

Lure of the Arctic, Cincinnati Art Museum, October 2007 - January 2008



Collection: Fry

Item Number: Fry0167

Category: Knife

Region: Arctic

Tribe: Eskimo

Period: 1875-1900

Materials: Walrus ivory and steel and seal hide sheath

Description: This knife, sheath and ulu, were collected in Northern Canada at an earlier time. The knife has a 1920 date on it, which is probably the collection date. Both the knife and ulu, as well as the sheath, appear to be older than that. These are well used Central Eskimo pieces.

Condition: Very Good

Dimensions: 10.5" (knife) 10" (ulu)

Provenance:

Tom Stark, Victoria, British Columbia

Exhibitions:

Lure of the Arctic, Cincinnati Art Museum, October 2007 - January 2008



Collection: Fry

Item Number: Fry0168

Category: Point - Harpoon Point

Region: Arctic

Tribe: Eskimo

Period: 1850-1875

Materials: Wood, bone, steel and flint.

Description: Hunting points and protective sheaths. The piece on the left is a Nunivac Island example.

Condition: Very Good

Dimensions: 13" and 15"



Collection: Fry

Item Number: Fry0169

Category: Knife

Region: Arctic

Tribe: Eskimo

Period: 1825-1850

Materials: Bone, steel and wood

Description: Unusual older Eskimo knife with steel, Hudson Bay style blade, with no visible markings. The shape of the blade and cutouts are characteristic of early imported trade blades. The bone and wood handle is riveted in place with crude rivets. The bone is joined in a manner consistent with the way in which harpoon forshafts, of bone and ivory, were scarf cut and joined by the Eskimos of Northern Canada when metal was first introduced into the Arctic. It is also similar in construction to the long snow block cutting knives on which the bone handles are similarly pieced together and riveted to native copper or steel blades. The shape of the hardwood handle on this knife has not been observed on any other. Opinions on the origin of this knife or knife style would be greatly appreciated. It would be interesting to know if similar examples exist.

Condition: Very Good

Dimensions: 22"

Provenance:

Paul Gray, Old Chatham, N.Y.
John Molloy, New York, N.Y., and Santa Fe, N.M.

Exhibitions:

Lure of the Arctic, Cincinnati Art Museum, October 2007 - January 2008



Collection: Fry

Item Number: Fry0170

Category: Blade - Adz Blades

Region: Arctic

Tribe: Eskimo

Period: 1875-1900

Materials: Bone handle, potentially whale bone, jade bit and seal hide lashings

Description: This adz was probably assembled with old components by the native people of Point Hope, Alaska in the 1950s. It was given to writer/artist, Claire Fejes, and is clearly referenced in her writings. The components appear original in all respects. The bit is well worn almost as if found in water where it would have been abraded and polished naturally. The handle, which is very nicely shaped, has darkened with age, possibly as the result of having been buried for some years.

Condition: Excellent

Dimensions: 12.5" x 3.5"

Provenance:

Claire Fejes, Fairbanks, Alaska, collected at Point Hope in the 1950s.

Exhibitions:

Lure of the Arctic, Cincinnati Art Museum, October 2007 - January 2008



Collection: Fry

Item Number: Fry0171

Category: Knife

Region: Arctic

Tribe: Eskimo

Period: 1825-1850

Materials: Bone, walrus ivory and sea mammal hide lashings.

Description: This is probably a Central Eskimo ivory bladed knife. It evidences no non-native features. The knife was broken and tied together in several places. This style knife may have been utilized for cutting snow blocks, for the building of a snow house, before the utilization of metal in the Arctic. This is a wonderful example of an early implement from Canada's high North.

Condition: Very Good

Dimensions: 17.5" x 2.75"

Provenance:

Paul Gray, Old Chatham, N.Y.

Exhibitions:

Lure of the Arctic, Cincinnati Art Museum, October 2007 - January 2008



Collection: Fry

Item Number: Fry0172

Category: Knife

Region: Arctic

Tribe: Eskimo

Period: 1850-1875

Materials: Bone and steel

Description: Snow knife, probably Central Eskimo, with steel blade fitted into a scarf cut bone handle, utilized for cutting snow blocks for constructing snow houses or igloos as they are known today. This is a common Northern Canada implement utilized by the native people of those regions.

Condition: Good

Dimensions: 17.25"

Provenance:

Old Barn Auctions, Findley, Ohio



Collection: Fry

Item Number: Fry0173

Category: Picker - Berry Picker

Region: Arctic

Tribe: Eskimo

Period: 1900-1925

Materials: Wood and metal nails

Description: Berry picking implement, wooden with dished out cavity and nails to pull the berries from the vines as they ripened in the long days of early summer.

Condition: Good

Dimensions: 8" +/-

Provenance:

Claire Fejes, Fairbanks, Alaska (bottom)

J. Steve and Anita Shearer, Torrance, CA. (top)

Exhibitions:

Lure of the Arctic, Cincinnati Art Museum, October 2007 - January 2008



Collection: Fry

Item Number: Fry0174

Category: Beads

Region: Arctic

Tribe: Eskimo

Period: 1875-1900

Materials: Glass trade beads on commercial string

Description: Trade beads have been imported into the Arctic since the earliest contact. These strands of beads, one primarily of blue, and the other of green, date to the last quarter of the 19th century or before. The blue string of trade beads was collected by artist and writer Claire Fejes in Point Hope, Alaska in the 1950s.

Condition: Good

Dimensions: 12" and 13"

Provenance:

Claire Fejes, Fairbanks, Alaska

Exhibitions:

Lure of the Arctic, Cincinnati Art Museum, October 2007 - January 2008



Collection: Fry

Item Number: Fry0175

Category: Shovel - Snow Shovel

Region: Arctic

Tribe: Eskimo

Period: 1875-1900

Materials: Walrus ivory and wood

Description: Small snow shovel with nicely formed walrus ivory blade edge. Shovels like this were likely used for the clearing of entrance ways to home sites following heavy snows.

Condition: Excellent

Dimensions: 17.5" x 8.75"

Provenance:

Paul Gray, Old Chatham, N.Y.

Exhibitions:

Lure of the Arctic, Cincinnati Art Museum, October 2007 - January 2008



Collection: Fry

Item Number: Fry0176

Category: Drill - Bow Drill

Region: Arctic

Tribe: Eskimo

Period: 1875-1900

Materials: Walrus ivory

Description: These two bow drills probably date to 1875, or possibly earlier. Both are walrus ivory, with only the ends carved. The ends of the top example are carved into a polar bear form. The smaller bow drill has carved seals at each end. Both are well executed early examples.

Condition: Very Good

Dimensions: 17.5" and 13"

Provenance:

Gary Litherland

Exhibitions:

Lure of the Arctic, Cincinnati Art Museum, October 2007 - January 2008



Collection: Fry

Item Number: Fry0177

Category: Float - Net Float

Region: Arctic

Tribe: Eskimo

Period: 1850-1875

Materials: Wood and sea mammal hide lashings.

Description: This is a set of net floats, of wood, reasonably plain and fairly complete. These floats were designed to keep the top or head of the net at the surface of the water with weights on the opposite side, holding it down. Eskimo fishing nets were usually made of baleen or thinly cut sea mammal hide and woven in a rectangular configuration three or so feet by up to twenty or more feet in size.

Condition: Good

Dimensions: 4" to 6" x 2" to 2.5"

Provenance:

Chilberg Collection



Collection: Fry

Item Number: Fry0178

Category: Box - Point Box

Region: Arctic

Tribe: Eskimo

Period: 1850-1875

Materials: Wood (cedar)

Description: This cedar point box, in the form of a whale, probably dates to early in the third quarter of the 19th century. The hinged lid is a replacement, however the box otherwise is in original condition. The cut whale flukes seen on many examples of point boxes are believed to have a particular significance. This piece is probably from Northwest Alaska.

Condition: Good

Dimensions: 9" x 3"

Provenance:

Paul Gray, Old Chatham, N.Y.

Exhibitions:

Lure of the Arctic, Cincinnati Art Museum, October 2007 - January 2008



Collection: Fry

Item Number: Fry0179

Category: Knife

Region: Arctic

Tribe: Eskimo

Period: 1875-1900

Materials: Bone, steel and musk ox horn

Description: Eskimo knife and ulu, probably Central Eskimo, from late in the third quarter of the 19th century or first quarter of the 20th century. The knife is of the style utilized to cut blocks of snow for house/igloo construction, however it is smaller than most. The ulu is large, with a musk ox handle. The inscription on these pieces indicates that both were collected at Ft. Hearne in Northern Canada in 1934, at the mouth of the Copper Mine River.

Condition: Very Good

Dimensions:

Provenance:

Bill Hahn



Collection: Fry

Item Number: Fry0180

Category: Adz

Region: Arctic

Tribe: Eskimo

Period: 1875-1900

Materials: Wood, bone, steel bits and sea mammal hide lashings

Description: These Eskimo adzes are of the style used by the Bering Sea Eskimos of the Point Hope and related coastal areas of Alaska. Handles were of either bone or wood. The blades or bits were often made of ax or hatchet heads or plane blades turned crossways as seen here so as to be oriented in the manner in which stone bladed adzes were constructed at an earlier time, before the introduction of modern tools.

Condition: Very Good

Dimensions: 9 11/10" +/-

Provenance:

Claire Fejes, Fairbanks, Alaska, probably collected by Claire at Point Hope, Alaska.



Collection: Fry

Item Number: Fry0181

Category: Adz

Region: Arctic

Tribe: Eskimo

Period: 1875-1900

Materials: Wood, bone and steel bits, as well as sea mammal hide lashings

Description: These Eskimo adzes are of the style used by the Bering Sea Eskimos of the Point Hope and related coastal areas of Alaska. Handles were of either bone or wood. The blades or bits were often made of ax or hatchet heads or plane blades turned crossways as seen here so as to be oriented in the manner in which stone bladed adzes were constructed at an earlier time, before the introduction of modern tools.

Condition: Very Good

Dimensions: 10"

Provenance:

Claire Fejes, Fairbanks, Alaska



Collection: Fry

Item Number: Fry0182

Category: Mask

Region: Arctic

Tribe: Eskimo

Period: 1850-1875

Materials: Wood

Description: Very early Eskimo mask of wood, darkened with age, collected in the Baffin Island area of Canada as noted on the old tag. This mask was collected in 1884, and was part of the Heye Foundation Collection until 1944.

Condition: Excellent

Dimensions: 6.5" x 4.5"

Provenance:

Grimmer/Roach, Santa Fe, N.M.
Deaccessioned from the Heye Foundation (16/6791) in 1944 to Julius Carlebach. Mr. Carlebach then sold the mask to Maria Martins (1894-1973) a Surrealist artist of the 1940s. The mask, which was taken to Brazil by Maria Martins was subsequently gifted to her daughter.

Exhibitions:

Lure of the Arctic, Cincinnati Art Museum, October 2007 - January 2008



Collection: Fry

Item Number: Fry0183

Category: Dart - Bird Dart

Region: Arctic

Tribe: Eskimo

Period: 1875-1900

Materials: Wood and walrus ivory

Description: These three Eskimo bird darts from Northwest Alaska were made to be thrown at molting birds with the use of an atlatl. The three walrus ivory prongs midway down the shaft of the darts were designed to catch the feathers of birds and bring them to the water.

Condition: Very Good

Dimensions: Length 34 inches to 44 inches



Collection: Fry

Item Number: Fry0184

Category: Dart - Bird Dart

Region: Arctic

Tribe: Eskimo

Period: 1850-1875

Materials: Wood, walrus ivory and bone

Description: These darts were meant to be thrown, with an atlatl, at molting birds. The splayed prongs were designed to catch the feathers of the birds and bring them to the water.

Condition: Excellent

Dimensions: 40" and 60"



Collection: Fry

Item Number: Fry0185

Category: Dart - Bird Dart

Region: Arctic

Tribe: Eskimo

Period: 1875-1900

Materials: Wood and walrus ivory

Description: Bird darts, two different styles, one with three forward prongs flaring outward, and the second with a single forward prong, and flaring prongs or points partway down the shaft. These darts were utilized, with an atlatl, for throwing into flocks of molting birds to bring them to the water.

Condition: Excellent

Dimensions: The longer dart is 60"



Collection: Fry

Item Number: Fry0186

Category: Dart - Bird Dart

Region: Arctic

Tribe: Eskimo

Period: 1850-1875

Materials: Wood, walrus ivory, sinew and seal hide lashings

Description: Old Eskimo bird darts, solid and heavy in weight with a large notched ivory point and three ivory prongs located midway down the shaft. These pieces are all marked "Simpson Collection". They are of the style found in Northwest Alaska.

Condition: Excellent

Dimensions: 68"

Provenance:

Simpson Collection. Little has been learned about this British collection. Any information would be greatly appreciated.



Collection: Fry

Item Number: Fry0187

Category: Dart

Region: Arctic

Tribe: Eskimo

Period: 1875-1900

Materials: Wood, walrus ivory and string lashings

Description: Relatively short unfletched sealing dart, to be thrown with an atlatl, probably by a hunter seated in a kayak. The heavy forpiece would add weight to this dart, causing the barbed point to penetrate the prey. The ivory point is attached to the shaft with twine, which would allow the point to detach on impact with the prey.

Condition: Very Good

Dimensions: 43"



Collection: Fry

Item Number: Fry0188

Category: Dart

Region: Arctic

Tribe: Eskimo

Period: 1875-1900

Materials: Walrus ivory points secured by sinew lashings, to wood shafts

Description: Eskimo darts from Northwest Alaska, made to be thrown with an atlatl, probably by a hunter seated in a kayak. The flared walrus ivory points were designed to strike molting sea birds.

Condition: Excellent

Dimensions: 63" and 45"



Collection: Fry

Item Number: Fry0189

Category: Dart

Region: Arctic

Tribe: Eskimo

Period: 1875-1900

Materials: Walrus ivory points secured by sinew lashings, to wood shafts

Description: Eskimo darts from Northwest Alaska, made to be thrown with an atlatl, probably by a hunter seated in a kayak. The flared ivory points were designed to strike molting sea birds.

Condition: Excellent

Dimensions: The longest dart of these is 72"



Collection: Fry

Item Number: Fry0190

Category: Plug - Wound Plug

Region: Arctic

Tribe: Eskimo

Period: 1875-1900

Materials: Wood

Description: These wound plugs were utilized by Eskimo hunters to insert into the wounds of hunted sea mammals, primarily seals. The plugs were inserted into the wounds and tied in place, to stop the bleeding, as the blood of the animal was utilized along with all other components. The large curved plug may actually be a throat plug used to prevent the animal from filling with water and sinking, as it was being pulled to shore behind a kayak.

Condition: Very Good

Dimensions: 1.5" to 9"

Provenance:

Jeffrey Myers, New York, N.Y.

Exhibitions:

Lure of the Arctic, Cincinnati Art Museum, October 2007 - January 2008



Collection: Fry

Item Number: Fry0191

Category: Stone - Killing Stone

Region: Arctic

Tribe: Eskimo

Period: 1875-1900

Materials: Commercial leather and hard white stone

Description: This almost marble like hard white stone was symmetrically shaped and drilled, and attached to a short piece of braided leather with a loop to extend around the wrist of the user. It was designed to enable a hunter seated in a kayak or hunting at a breathing hole to kill a seal once it had been harpooned and pulled within striking distance of the hunter.

Condition: Very Good

Dimensions: 2" x 2.5" (stone only)

Exhibitions:

Lure of the Arctic, Cincinnati Art Museum, October 2007 - January 2008



Collection: Fry

Item Number: Fry0192

Category: Point - Harpoon Point

Region: Arctic

Tribe: Eskimo

Period: 1875-1900

Materials: Steel and walrus ivory

Description: Large harpoon points from Northern Canada, nicely carved of walrus ivory and fitted with steel points pinned in place. These are toggle head harpoons, intended to toggle on penetrating a sea mammal. The hide line to which the head was attached would enable the hunter to retrieve the prey. Both harpoon points are of the style collected in the Cumberland Sound area of Canada after 1850 and well before 1900

Condition: Very Good

Dimensions: 5"

References:

Aboriginal American Harpoons: Study in Ethnic Distribution and Invention by Otis Tufton Mason, published in 1900, plate 7



Collection: Fry

Item Number: Fry0193

Category: Atlatl

Region: Arctic

Tribe: Eskimo

Period: 1875-1900

Materials: Wood with walrus ivory pins

Description: Atlatls like these, were utilized by Eskimo hunters usually while seated in a kayak. The atlatl provided added leverage as darts or ñatlatl darts were thrown toward prey. The larger atlatl has two ivory pins for finger rests and an inset ivory piece to support the dart itself. The atlatl has non native initials carved in the groove where the dart would be placed, FDJH. The smaller of the two atlatls has an ivory hook pinned in place to support the dart while it is being projected forward. Both examples are shaped to fit the hand of the user. Both are of the style found in Northwest Alaska.

Condition: Very Good

Dimensions: 18" and 15"

Provenance:

Christeen Heller, Fairbanks, Alaska (larger atlatl)
Earl Duncan, Denver, Colorado (smaller atlatl).



Collection: Fry

Item Number: Fry0194

Category: Scraper

Region: Arctic

Tribe: Eskimo

Period: 1875-1900

Materials: Wood and iron

Description: Eskimo scrapers of this description were utilized, primarily by Eskimo women, to scrape the undersides of hides, to prepare them for the making of clothing, kayak coverings or other objects.

Condition: Good

Dimensions: 23"

Provenance:

The top scraper was acquired from Ralph and Betty Miller of the Miller Museum in Homer, Alaska, and the bottom one from Claire Fejes, Fairbanks, Alaska.



Collection: Fry

Item Number: Fry0195

Category: Float - Net Float

Region: Arctic

Tribe: Eskimo

Period: 1900-1925

Materials: Wood, walrus ivory and seal hide line.

Description: Net float, from Point Hope, Alaska, collected by Claire Fejes in the 1950s. This net float has two ivory rattles to alert the Eskimo fishermen that they have made a catch. The seal imagery was used on net floats like this, since seals were considered good fish catchers. It was thought that the seal image would aid the fishermen.

Condition: Good

Dimensions: 4.25"

Provenance:

Claire Fejes, Fairbanks, Alaska



Collection: Fry

Item Number: Fry0196

Category: Float - Net Float

Region: Arctic

Tribe: Eskimo

Period: 1850-1875

Materials: Wood

Description: Early seal head net float from Point Hope, Alaska, weathered but quite recognizable. Net floats like this were used by the Point Hope fishermen to aid in bringing fish to the net.

Condition: Fair

Dimensions: 3.50"

Provenance:

Christeen Heller Collection



Collection: Fry

Item Number: Fry0197

Category: Float - Net Float

Region: Arctic

Tribe: Eskimo

Period: 1875-1900

Materials: Wood

Description: Net float, animal imagery, used by the fishermen of Point Hope, Alaska to support the head of the net. It was thought that the animal imagery would aid in bringing fish to the net.

Condition: Good

Dimensions: 5.75"

Provenance:

Claire Fejes, Fairbanks, Alaska



Collection: Fry

Item Number: Fry0198

Category: Float - Net Float

Region: Arctic

Tribe: Eskimo

Period: 1875-1900

Materials: Wood

Description: Net float, animal imagery, used by the fishermen of Point Hope, Alaska to support the head of the net. It was thought that the animal imagery would aid in bringing fish to the net.

Condition: Good

Dimensions: 4.50"

Provenance:

Christeen Heller, Alaska



Collection: Fry

Item Number: Fry0199

Category: Effigy

Region: Arctic

Tribe: Eskimo

Period: 1875-1900

Materials: Wood

Description: Miniature point box in the form of a bow head whale. It is not known whether or not this small point box was utilized as that, or whether it was simply a miniature, made for some symbolic purpose. The carving of the whale itself is of very nice quality.

Condition: Very Good

Dimensions: 2.5" x .75"

Provenance:

Jack Curtright, Tacoma, WA

Exhibitions:

Lure of the Arctic, Cincinnati Art Museum, October 2007 - January 2008



Collection: Fry

Item Number: Fry0200

Category: Scrapers

Region: Arctic

Tribe: Eskimo

Period: 1850-1875

Materials: Walrus ivory tusks

Description: Hide scrapers, cut from walrus ivory tusks at the point where the tusk enters the skull of the walrus.

Condition: Very Good

Dimensions:

Provenance:

The scraper on the left was acquired from Jessie McGahan. The smaller scraper was acquired at Christies, Amsterdam.



Collection: Fry

Item Number: Fry0201

Category: Effigy

Region: Arctic

Tribe: Eskimo

Period: 1850-1875

Materials: Wood

Description: Effigy, in the form of an adult male, with head tilted back. This figure was collected by Claire Fejes, probably at Point Hope, Alaska in the 1950s. The effigy is, however, substantially older and probably dates to 1850-1875. The purpose of it is not known.

Condition: Good

Dimensions: 8"

Provenance:

Claire Fejes, Point Hope, Alaska

Exhibitions:

Lure of the Arctic, Cincinnati Art Museum, October 2007 - January 2008



Collection: Fry

Item Number: Fry0202

Category: Effigy

Region: Arctic

Tribe: Eskimo

Period: 1800-1825

Materials: Wood

Description: Wood figures, very crudely carved and very old. These pieces were probably excavated. The purpose for which they were made is not known.

Condition: Good

Dimensions: 5"

Provenance:

Christeen Heller, Alaska



Collection: Fry

Item Number: Fry0203

Category: Tubes - Drinking Tubes

Region: Arctic

Tribe: Eskimo

Period: 1850-1875

Materials: Bond and cord

Description: Hollow bones, probably bird wing bones, attached to cords. These are believed to be Eskimo drinking tubes utilized for drinking the fresh water off sea ice. The old cords attached to them are probably for hanging the implements around the neck of the owner. These tubes are quite similar and may have been made by the same hand.

Condition: Very Good

Dimensions: 7"

Exhibitions:

Lure of the Arctic, Cincinnati Art Museum, October 2007 - January 2008



Collection: Fry

Item Number: Fry0204

Category: Ulu

Region: Arctic

Tribe: Eskimo

Period: 1925-1950

Materials: Bone and steel

Description: Well worn ulu from St. Lawrence Island, Alaska, collected on the Island by W.R. Fry in recent years.

Condition: Good

Dimensions:

Provenance:

St. Lawrence Island, Alaska



Collection: Fry

Item Number: Fry0205

Category: Crampons

Region: Arctic

Tribe: Eskimo

Period: 1900-1925

Materials: Wood, iron, seal hide lashings

Description: Crampons, made to be tied to the bottom of Eskimo boots, for aid in walking on smooth sea ice.

Condition: Very Good

Dimensions: 4.5"

Provenance:

Ralph and Betty Miller, The Miller Museum, Homer,
Alaska

Exhibitions:

Lure of the Arctic, Cincinnati Art Museum, October 2007 -
January 2008



Collection: Fry

Item Number: Fry0206

Category: Drill - Bow Drill

Region: Arctic

Tribe: Eskimo

Period: 1875-1900

Materials: Walrus ivory

Description: Eskimo bow drills, partially decorated, made for use with a mouthpiece and bit.

Condition: Very Good

Dimensions: The longest of these is 14"

Provenance:

The top and bottom bows were acquired from Gary Litherland. The bow in the center was acquired from Claire Fejes, Fairbanks, Alaska.



Collection: Fry

Item Number: Fry0207

Category: Ulu

Region: Arctic

Tribe: Eskimo

Period: 1900-1925

Materials: Walrus ivory and metal

Description: Small ulu with triangular walrus ivory grip. This ulu was collected by W.R. Fry in Gamble, Alaska, St. Lawrence, Island. It is considered a small woman's knife, probably for sewing.

Condition: Very Good

Dimensions: 2.75" x 2.75"

Exhibitions:

Lure of the Arctic, Cincinnati Art Museum, October 2007 - January 2008



Collection: Fry

Item Number: Fry0208

Category: Scraper

Region: Arctic

Tribe: Eskimo

Period: 1875-1900

Materials: Wood, seal hide lashings and slate blade

Description: Eskimo scraper, with slate blade, for scraping and preparing hides.

Condition: Very Good

Dimensions: 9" x 3"

Provenance:

Cowan Auctions
Western Reserve Historical Society
Birmingham Museum #9384.



Collection: Fry

Item Number: Fry0209

Category: Mortar

Region: Arctic

Tribe: Eskimo

Period: 1875-1900

Materials: Wood

Description: Small mortar, probably for tobacco. The old tag says it was ñfor preparing snuff. This was burnt using seaweed and plantsí.

Condition: Very Good

Dimensions: 6.5" x 3"

Provenance:

Earl Duncan, Denver, Colorado



Collection: Fry

Item Number: Fry0210

Category: Knife

Region: Arctic

Tribe: Eskimo

Period: 1875-1900

Materials: Walrus ivory, seal hide lashings and iron blade

Description: Eskimo knife, with curved ivory handle, collected at Fort Wrangel, Alaska in 1893, and marked ñEsquimau, collected by Dr. Glanemannî.

Condition: Very Good

Dimensions: 8"



Collection: Fry

Item Number: Fry0211

Category: Mouthpiece

Region: Arctic

Tribe: Eskimo

Period: 1875-1900

Materials: Wood and stone

Description: Eskimo mouthpiece, for holding a bit while using a bow drill. This older mouthpiece was crudely carved in the shape of a whale.

Condition: Good

Dimensions: 5.75"



Collection: Fry

Item Number: Fry0212

Category: Net shuttle

Region: Arctic

Tribe: Eskimo

Period: 1875-1900

Materials: Walrus ivory

Description: Net shuttles, of this configuration, were utilized by their Eskimo owners to hold the baleen or thinly cut sea mammal hide used to weave fishing nets.

Condition: Very Good

Dimensions: 9.5" x 1.25"

Provenance:

Gary Litherland, Bourbonnais, Illinois
Augie Johnson Collection



Collection: Fry

Item Number: Fry0213

Category: Point - Lance Point

Region: Arctic

Tribe: Eskimo

Period: 1875-1900

Materials: Bone, walrus ivory, iron and wood

Description: Detachable lance and harpoon points on ivory, bone and wood shafts, with iron points, were utilized by Eskimo hunters to kill prey once it had been wounded. The points could then be retrieved.

Condition: Good

Dimensions: Length 6.5 inches to 9.5 inches



Collection: Fry

Item Number: Fry0214

Category: Knife

Region: Arctic

Tribe: Eskimo

Period: 1875-1900

Materials: Wood and iron

Description: Short bladed knives with wood handles. The blades appear to have been made from available material, and fitted to the handles.

Condition: Good

Dimensions: 5" and 5.25"

Provenance:

The knife on the right was acquired from Gary Litherland, Bourbonnais, Illinois.



Collection: Fry

Item Number: Fry0215

Category: Doll

Region: Arctic

Tribe: Eskimo

Period: 1875-1900

Materials: Walrus ivory

Description: Doll, of walrus ivory, the specific purpose of which is unknown. This could have been a child's toy however dolls, of this general form, were made by the Eskimos throughout pre-history which suggests some other social or sacred purpose.

Condition: Very Good

Dimensions: 3.75"

Exhibitions:

Lure of the Arctic, Cincinnati Art Museum, October 2007 - January 2008

